

Wireless Network Configuration for Mac 10.6 (Snow Leopard)

NOTE: Read the numbered steps. Failure to read the steps may cause errors that require users to start over.

System Requirements:

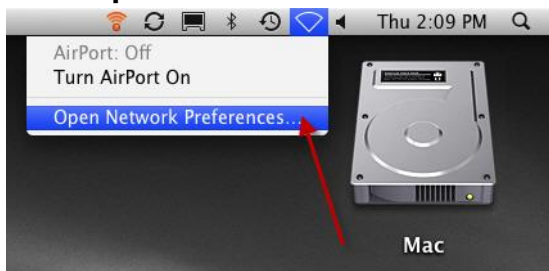
Mac OS Version 10.6

Procedure:

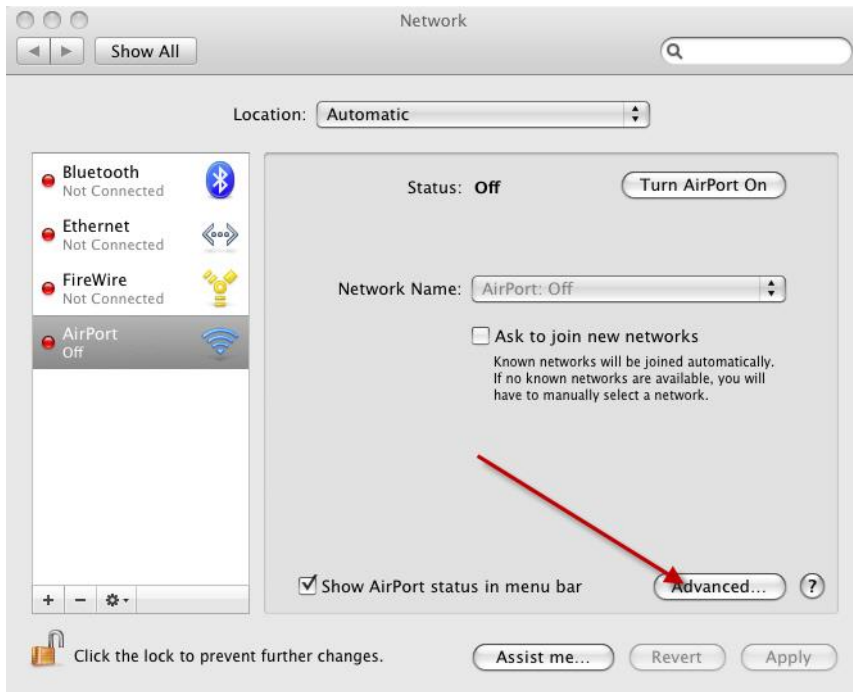
1. Click "Turn AirPort off" (if on)



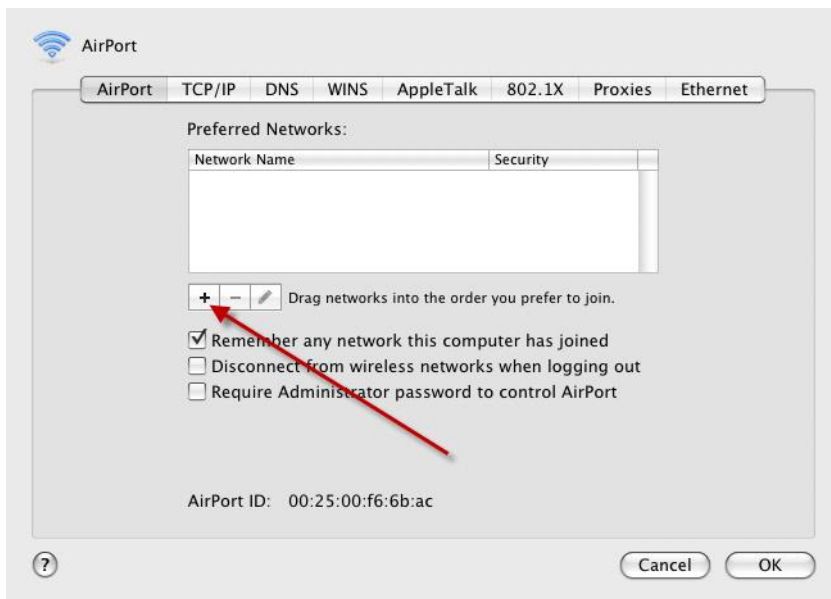
2. Click "Open Network Preferences"



3. Click "Advanced"



4. Click "+"



5. **Type "students"** in "Network Name" field.

It must be all lower-case and with an "s" at the end. "Student", "student", or "Students" will not work.



Enter the name of the network.
Enter the name of the network you want to add, and then enter the password if necessary. You can also click Show Networks to see a list of available networks.

Network Name:

Security:

Remember this network

Show Networks Cancel Add

6. **Select "WPA Enterprise"**



Enter the name of the network.
Enter the name of the network you want to add, and then enter the password if necessary. You can also click Show Networks to see a list of available networks.

Network Name:

Security:

- None
- WEP Password
- WEP 40/128-bit hex
- WEP 40/128-bit ASCII
- LEAP
- WPA Personal
- WPA Enterprise**
- WPA2 Personal
- WPA2 Enterprise
- 802.1X WEP

Show Networks

7. **Type your student ID** number in the "User Name" field

8. **Type your PIN** in the "Password" field.

Your default PIN is your birthday (mmddyy) and must always be a 6 digit number. If you have changed your CBC PIN to a shorter number, add leading zeros to it to make it 6 digits (1234 = 001234).



Enter the name of the network.
Enter the name of the network you want to add, and then enter the password if necessary. You can also click Show Networks to see a list of available networks.

Network Name:

Security:

User Name:

Password:

802.1X:

Remember this network

Show Networks Cancel Add

9. Click "Add"

Enter the name of the network.

Enter the name of the network you want to add, and then enter the password if necessary. You can also click Show Networks to see a list of available networks.

Network Name: students

Security: WPA Enterprise

User Name:

Password:

802.1X: Automatic

Remember this network

Show Networks Cancel Add

10. Click "OK"

AirPort

AirPort TCP/IP DNS WINS AppleTalk 802.1X Proxies Ethernet

Preferred Networks:

Network Name	Security
students	WPA Enterprise

+ - Drag networks into the order you prefer to join.

Remember any network this computer has joined

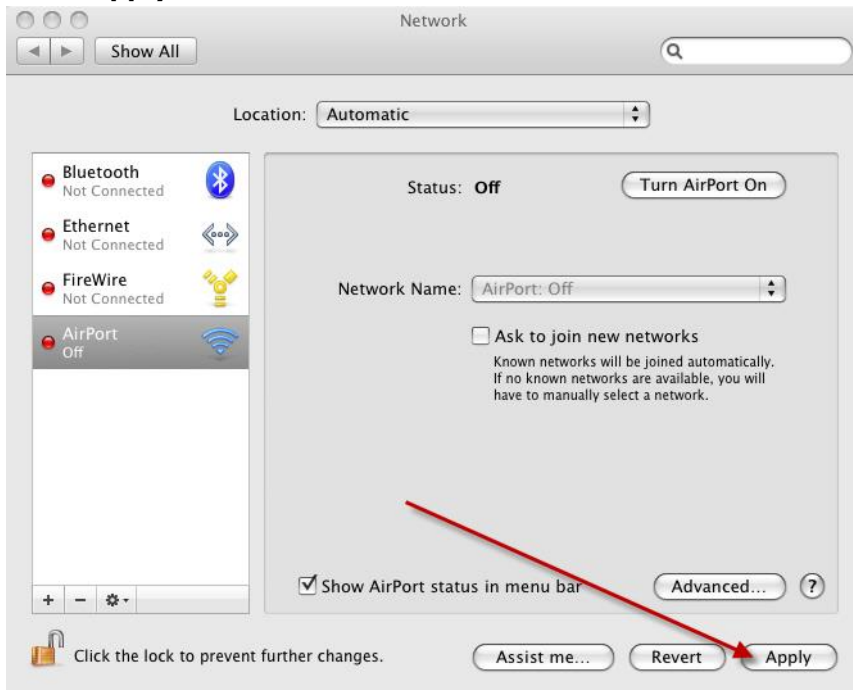
Disconnect from wireless networks when logging out

Require Administrator password to control AirPort

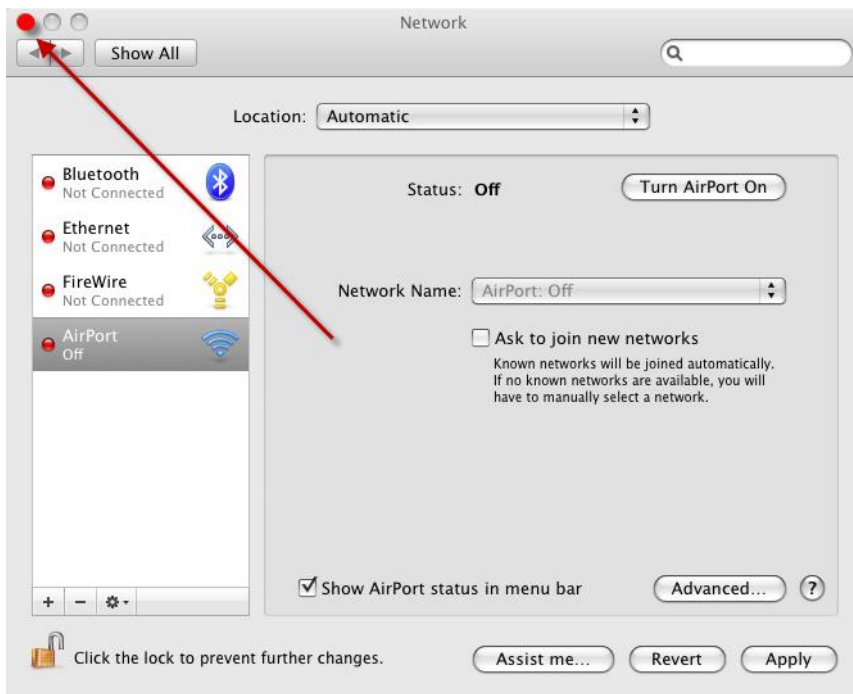
AirPort ID: 00:25:00:f6:6b:ac

? Cancel OK

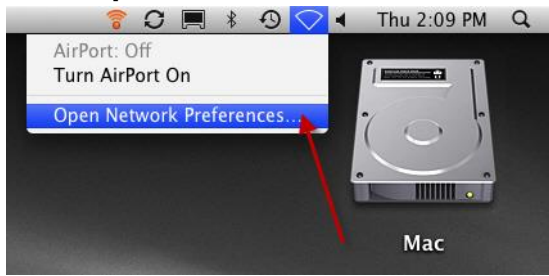
11. Click "Apply"



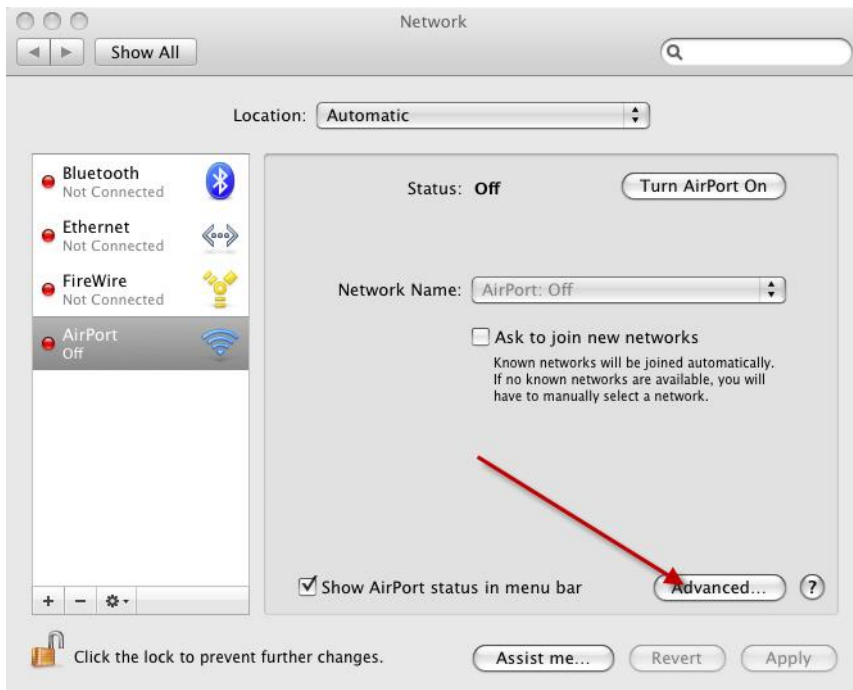
12. Close Network Window



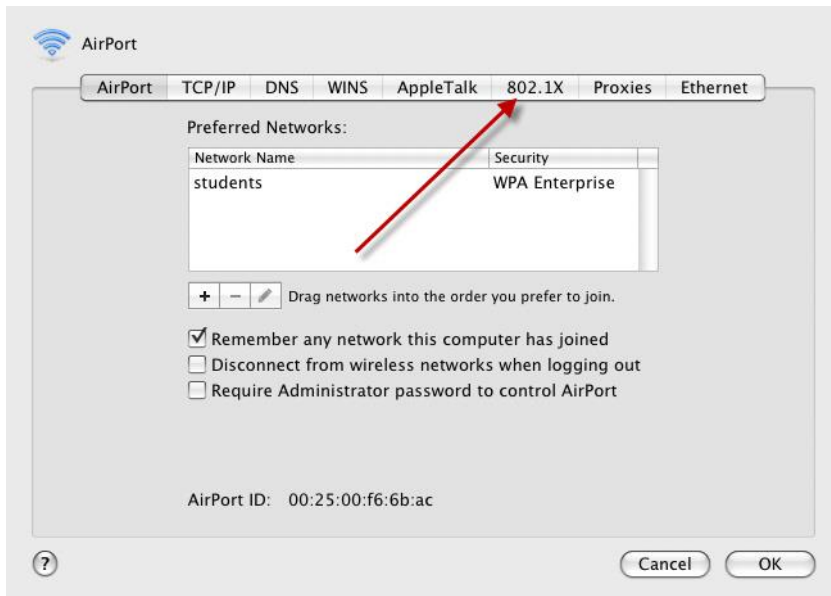
13. Click "Open Network Preferences"



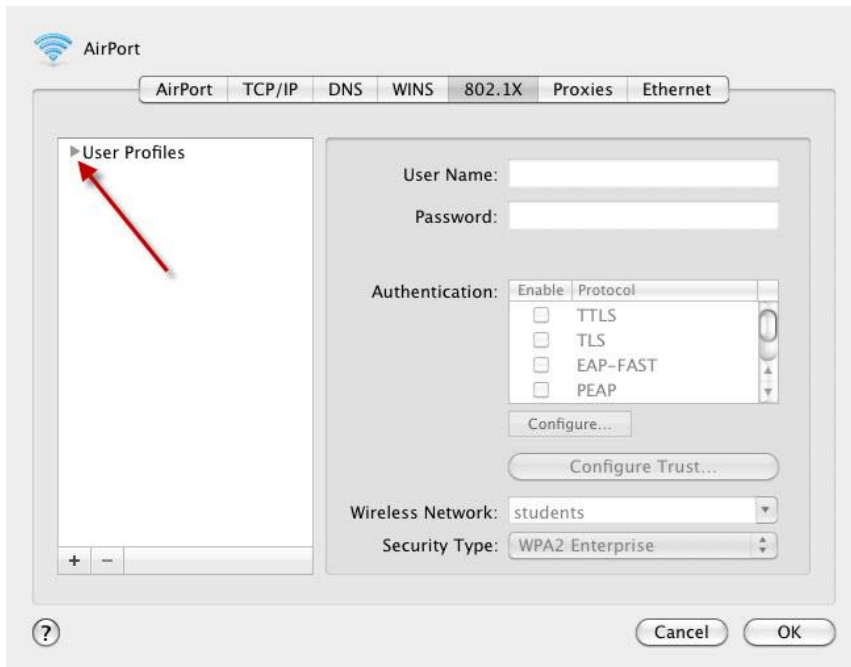
14. Click "Advanced"



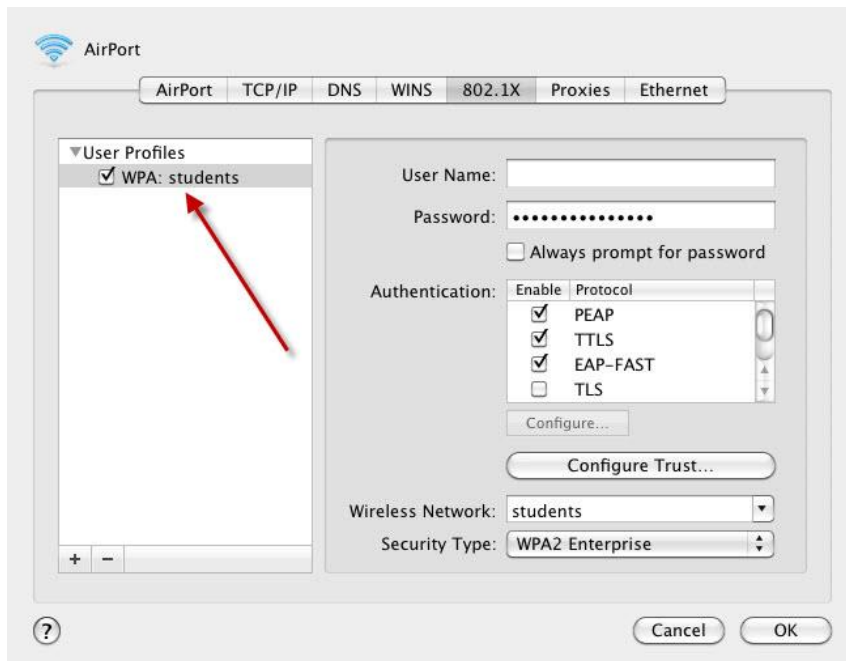
15. Click "802.1X"



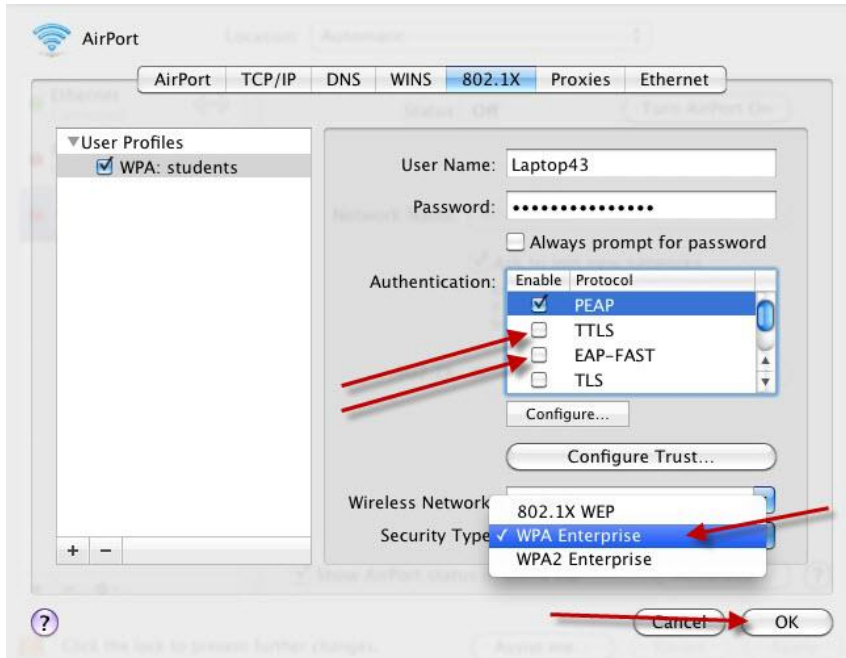
16. Click the **Arrow** next to "User Profile"



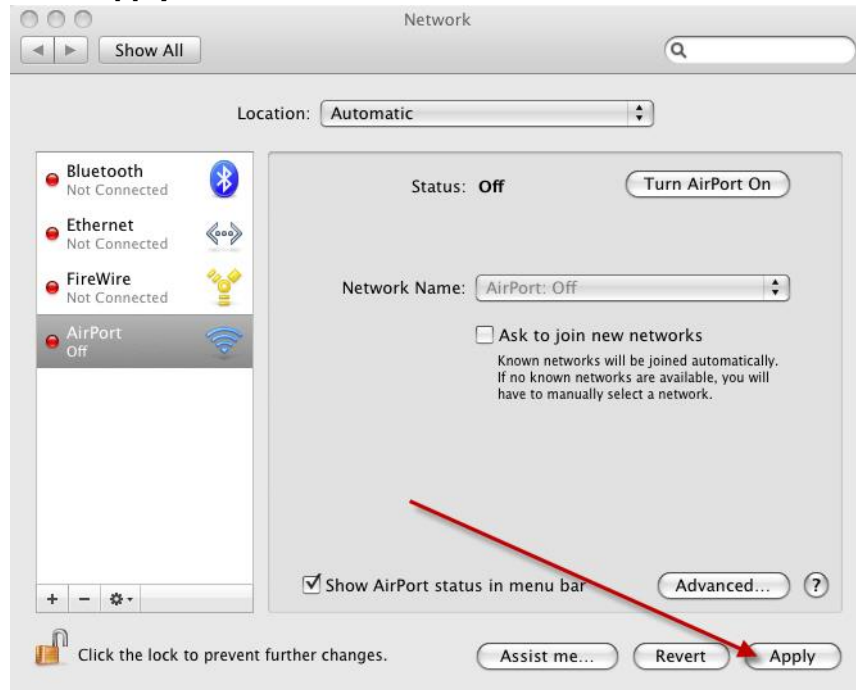
17. Select **"WPA: students"** do not uncheck it



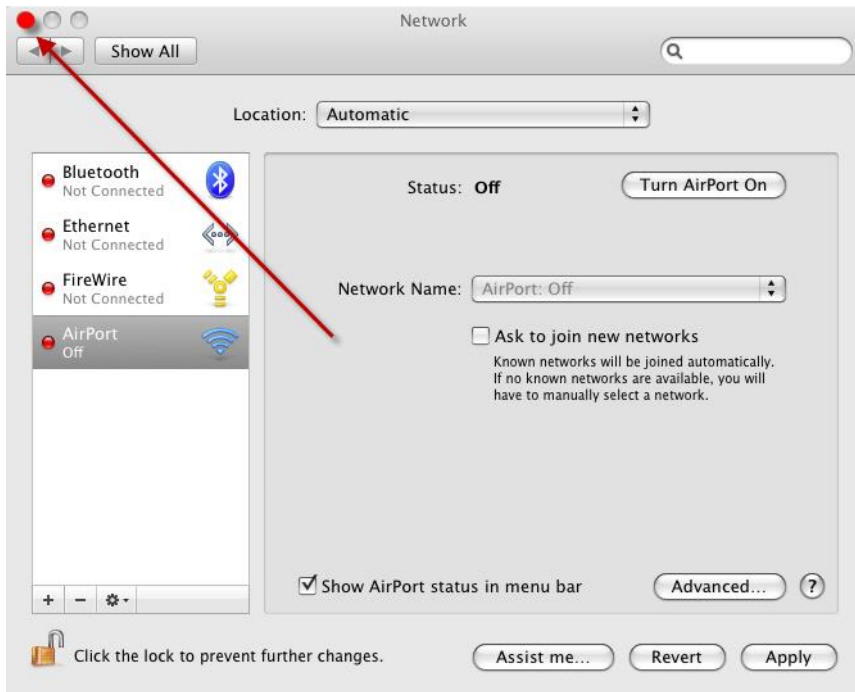
- 18. Uncheck "TTLS" and "EAP-FAST" do not uncheck "PEAP"
- 19. Select "WPA Enterprise"
- 20. Click "OK"



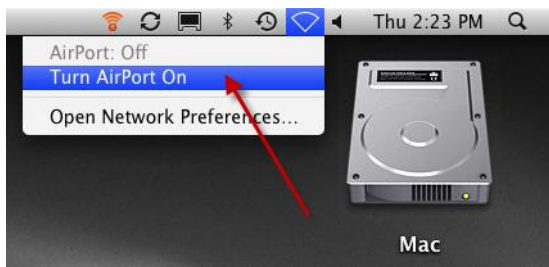
- 21. Click "Apply"



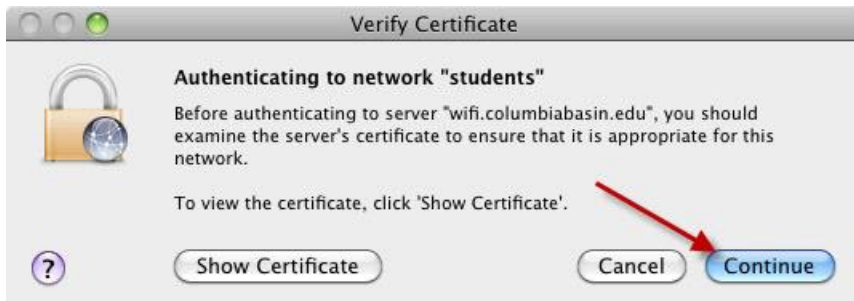
22. **Close Network Window**



23. **Click "Turn on AirPort"**



24. **Click "Continue"**



25. **Type** your computer's **username and password** (username may be already present)
26. **Click "OK"**



Congratulations! Your computer is now configured to use the CBC wireless network.

If you need additional help getting connected, please drop by the Computer Assistance desk in the Library.