

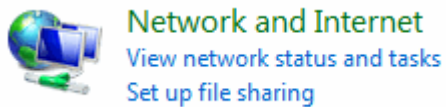
Wireless Network Configuration on Windows Vista

System Requirements:

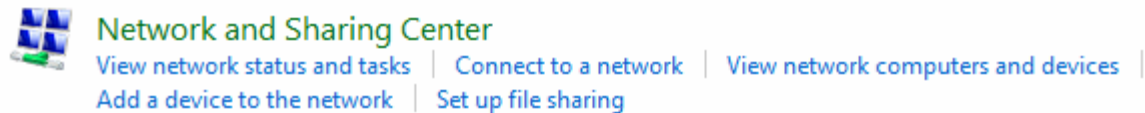
Windows Vista

Procedure:

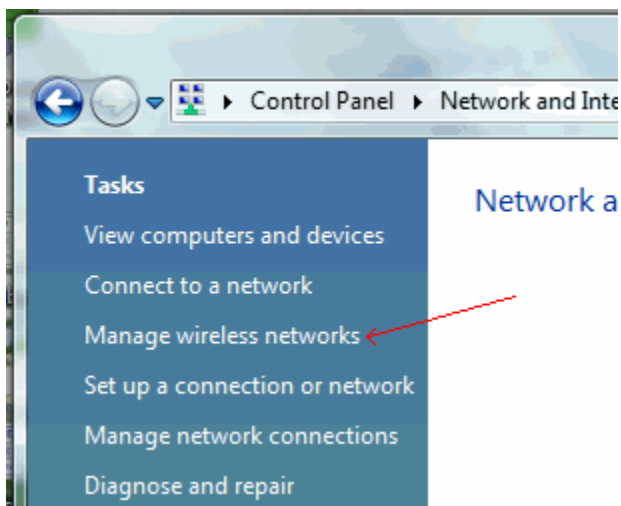
1. Go to the **Control Panel**
2. Click on **Network and Internet**



3. Click on **Network and Sharing Center**



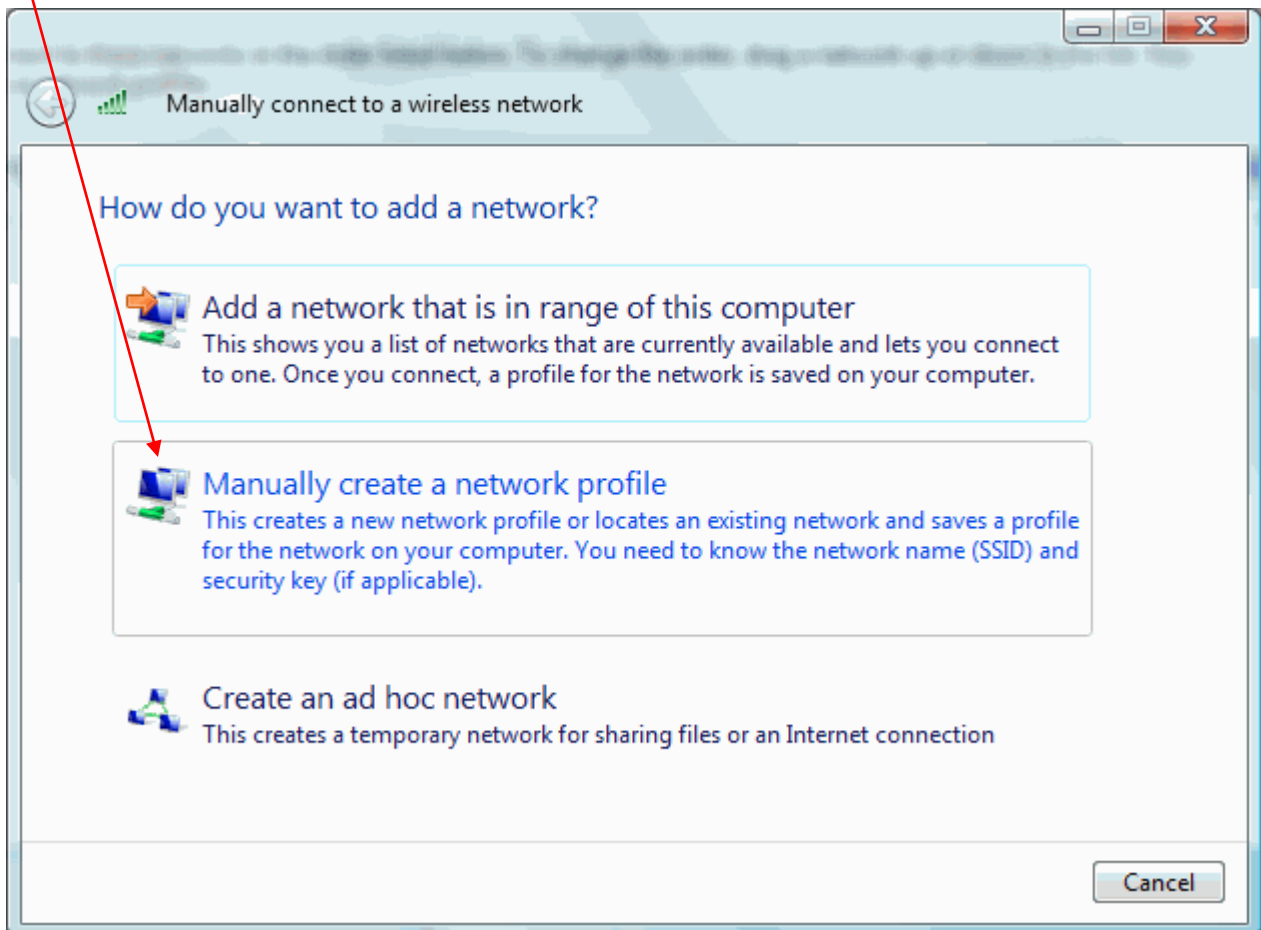
4. Click on **Manage wireless networks** under **Tasks**



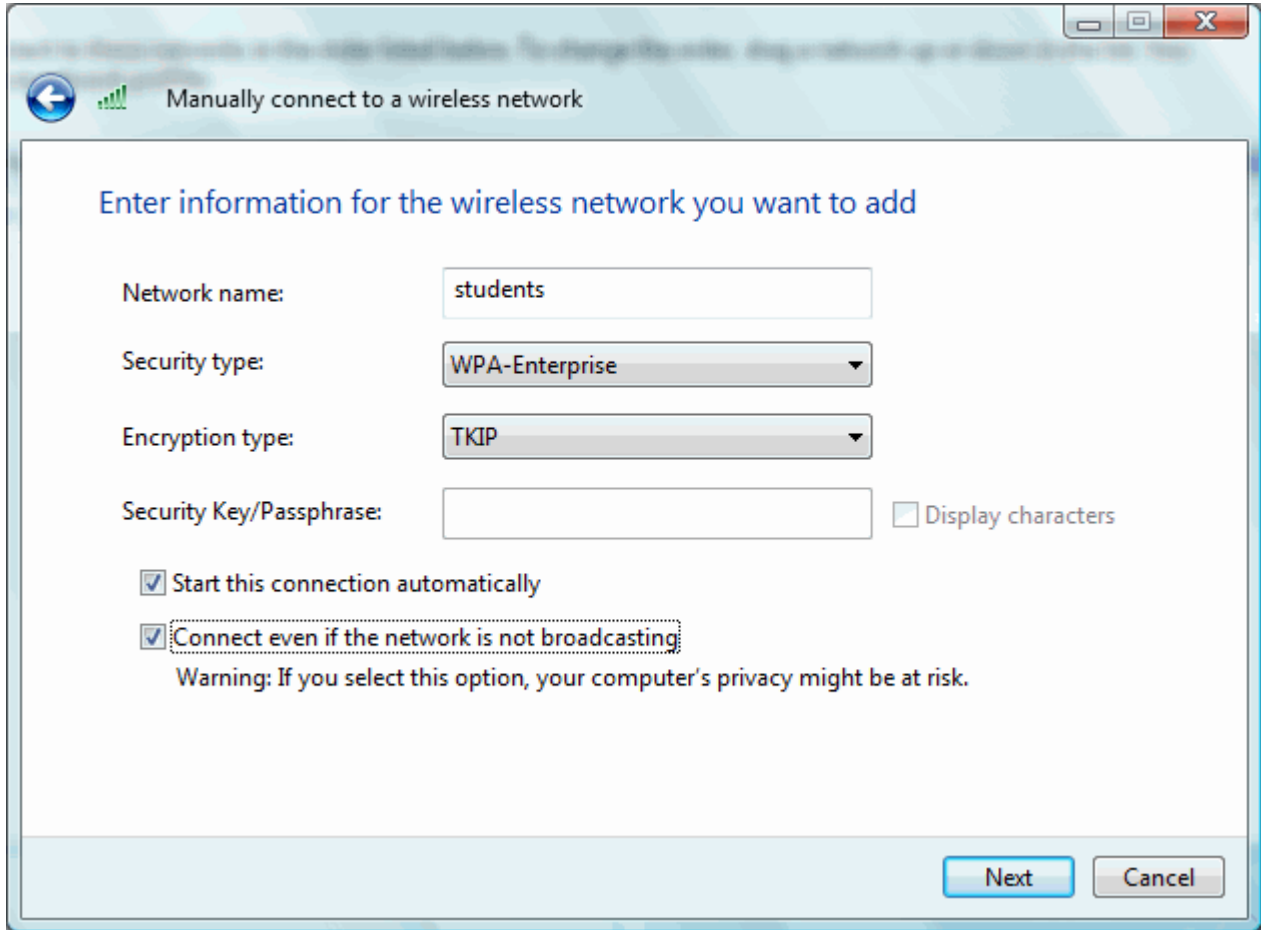
5. Check to see if you have a wireless network named **students**. If it's there, select it, then click **Remove**
6. Click **Add**



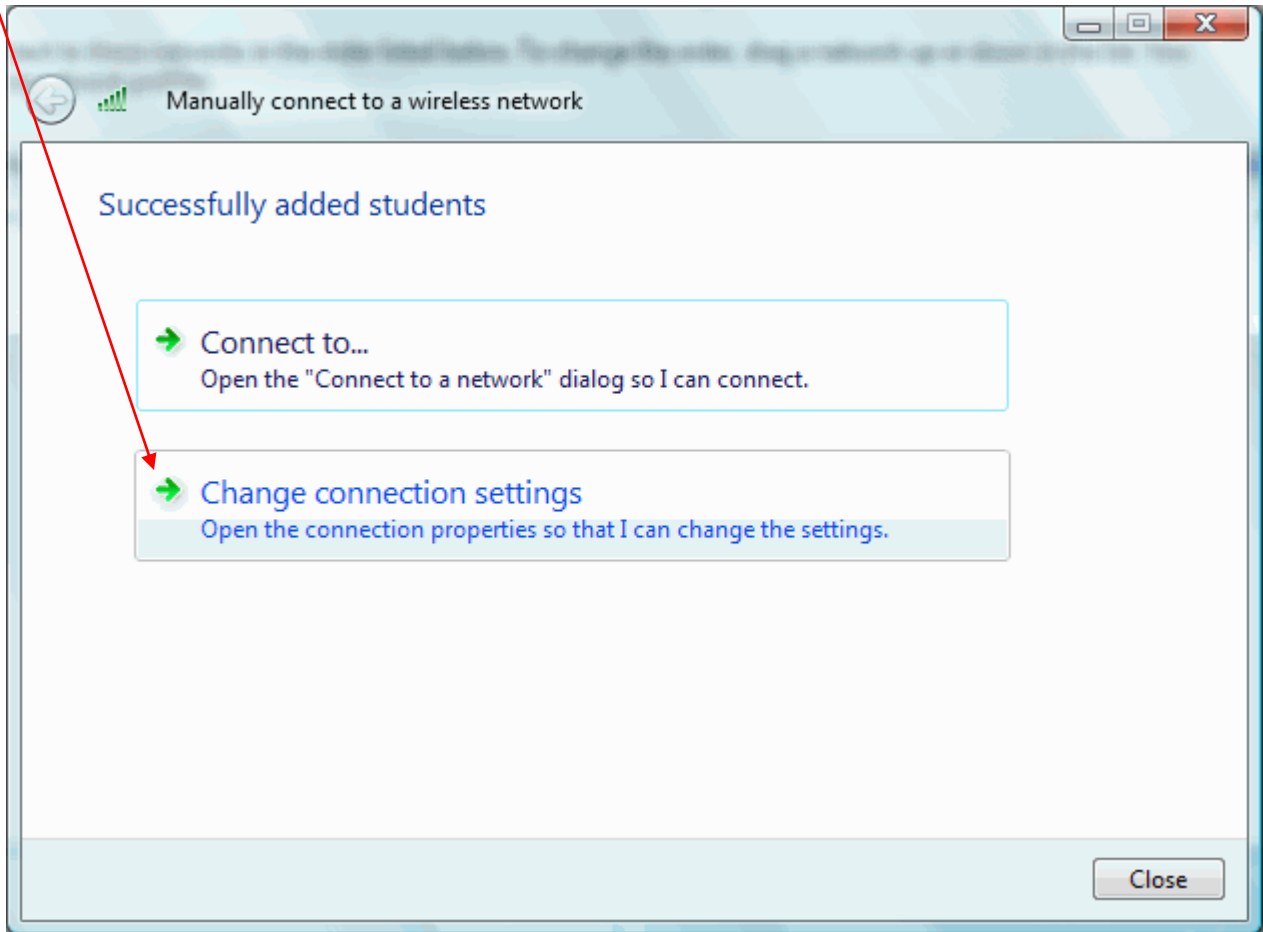
7. Click **Manually create a network profile**



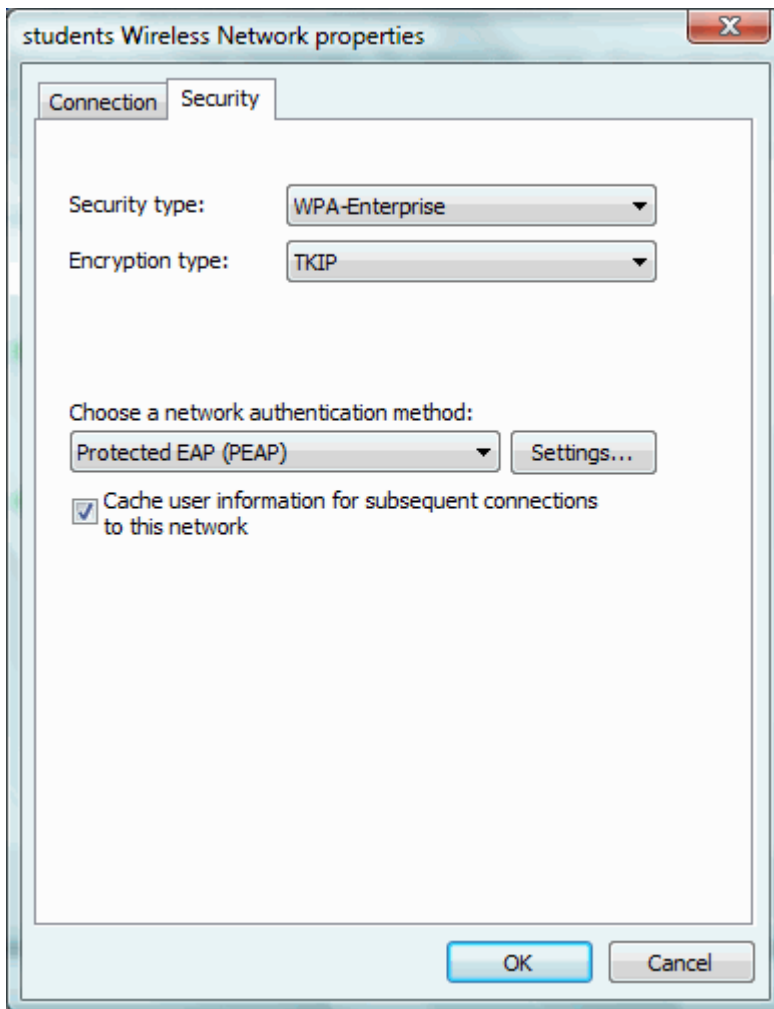
8. Type **students** (all lowercase) in the **Network name** field
9. Select **WPA-Enterprise** for the **Security type**
10. Select **TKIP** for the **Encryption type**
11. Check the **Start this connection automatically** checkbox
12. Check the **connect even if the network is not broadcasting** checkbox
13. Click **Next**



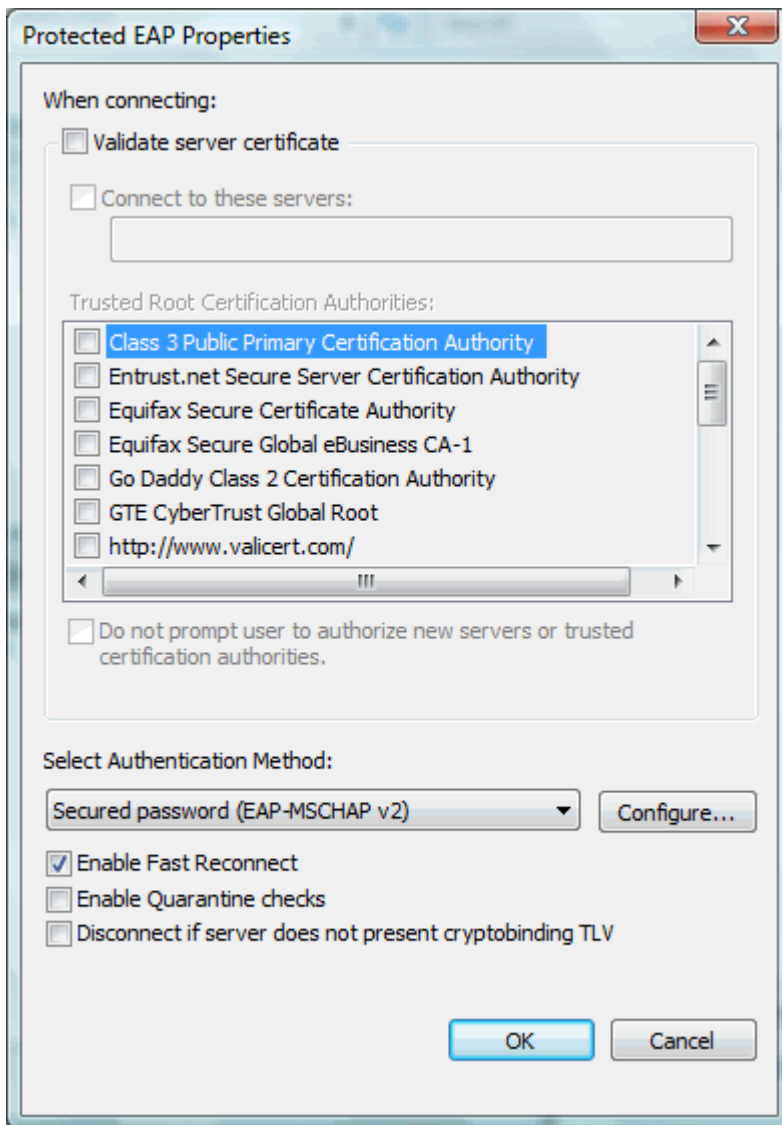
14. Click **Change connection settings**



15. Click the **Security** tab
16. Select **Protected EAP (PEAP)** from the **Choose a network authentication method** drop-down list
17. Check the **Cache user information for subsequent...** checkbox
18. Click the **Settings** button next to **Protected EAP (PEAP)**

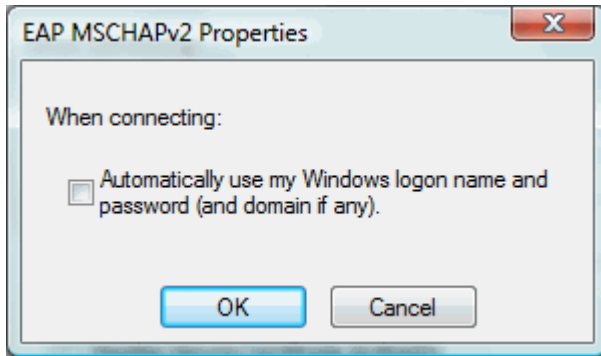


19. Uncheck the **Validate server certificate** checkbox
20. Select **Secured password (EAP-MSCHAP v2)** from the **Select Authentication Method** drop-down list
21. Click the **Configure** button



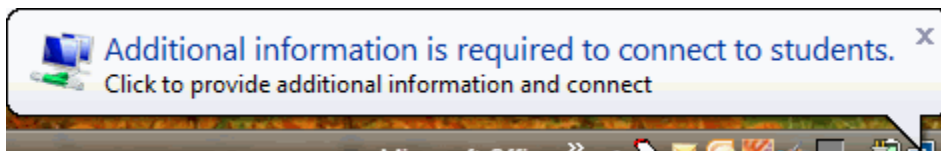
22. Uncheck **Automatically use my Windows logon name...**

23. Click **OK**



24. Click the **OK** and **Close** buttons on all the open windows

25. Click on the **Additional information is required to connect to students** bubble



26. Type in your student ID in the **User name** field

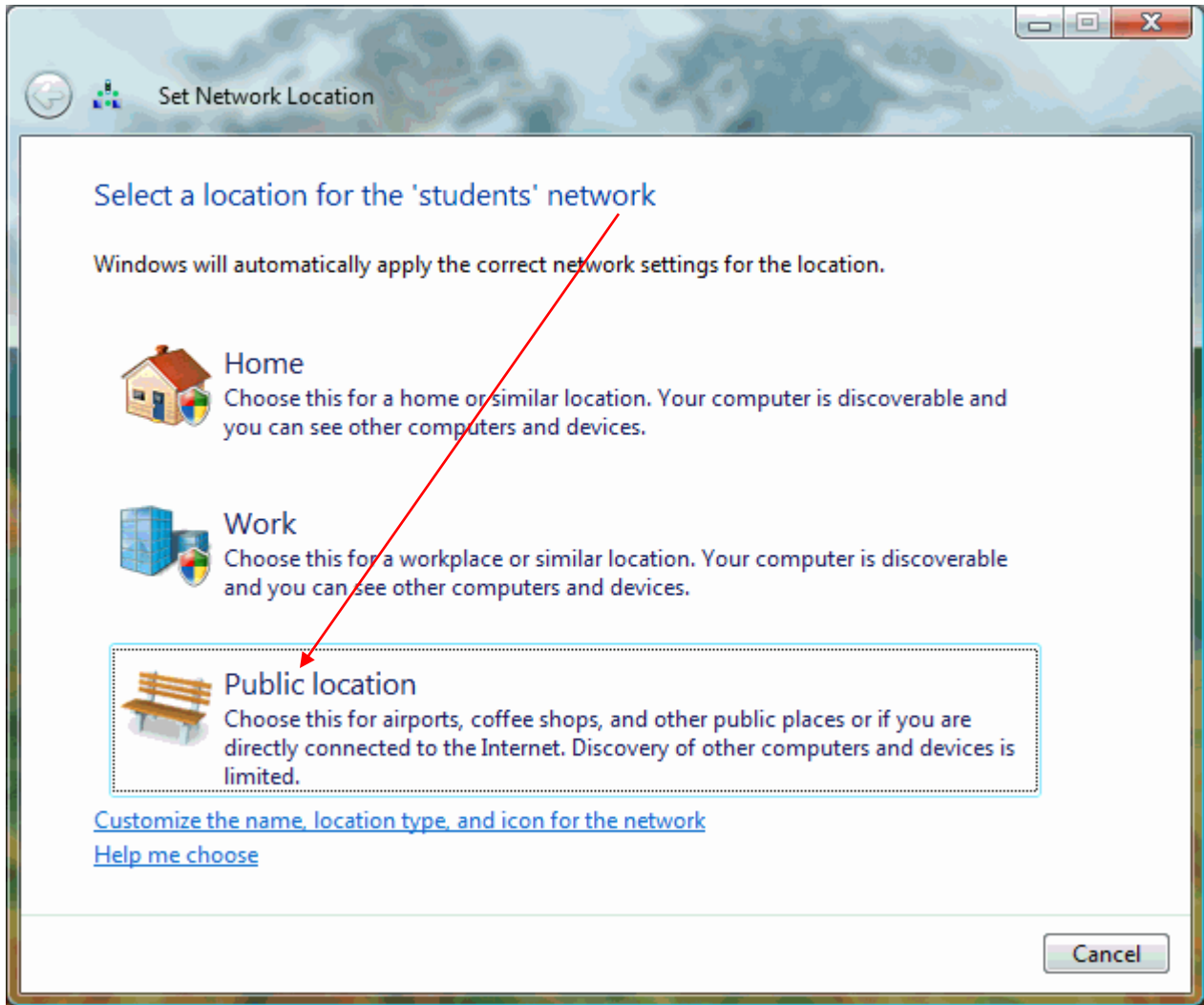
27. Type in your PIN in the **Password** field

28. Type in **ARDA** in the **Logon domain** field

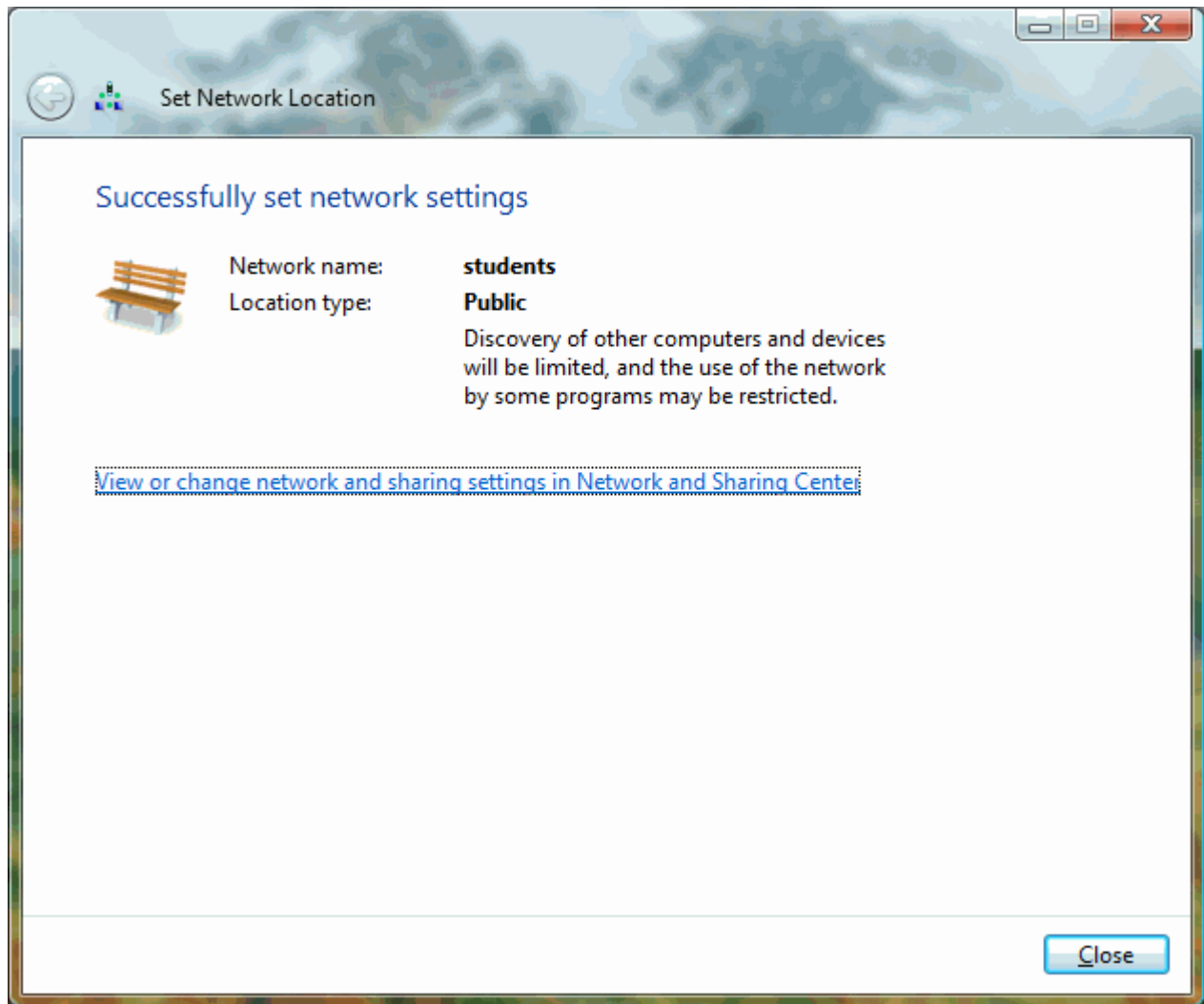
29. Click **OK**



30. You may be prompted to **select a location for the 'students' network**, if so, click **Public location**



31. Click **Close** (only if this and the previous window appear)



Congratulations! Your computer is now configured to use the CBC wireless network.