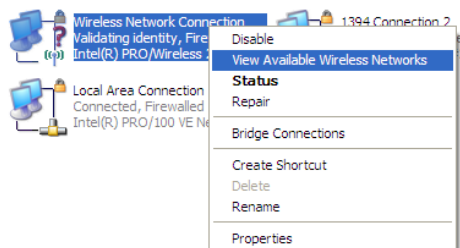


## CBC\_Staff XP Wireless Network Access

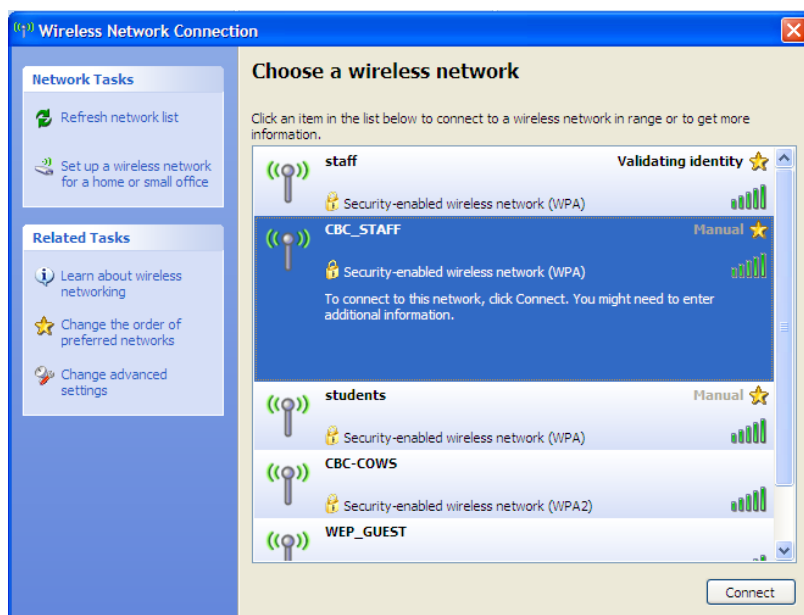
**NOTE:** This new setup uses the end-users ARDA login information.

### Start | Network Connection

Right-click on the **Wireless Network Connection | View Available Wireless Networks**

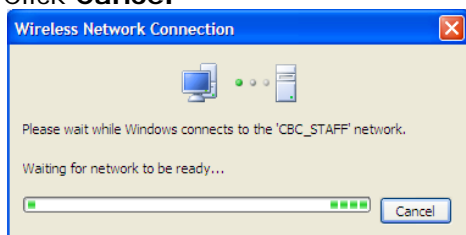


Double-click on the **CBC\_Staff | Connect**

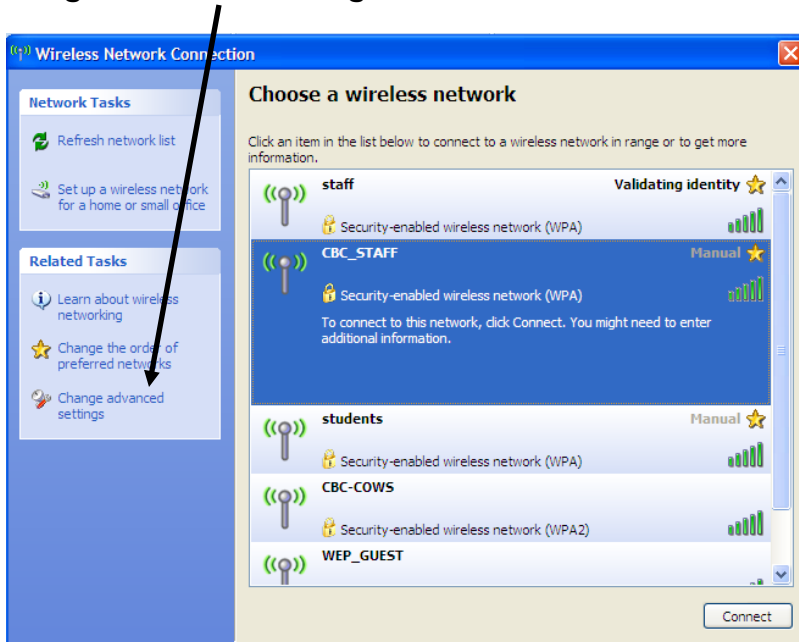


It will try to connect but won't

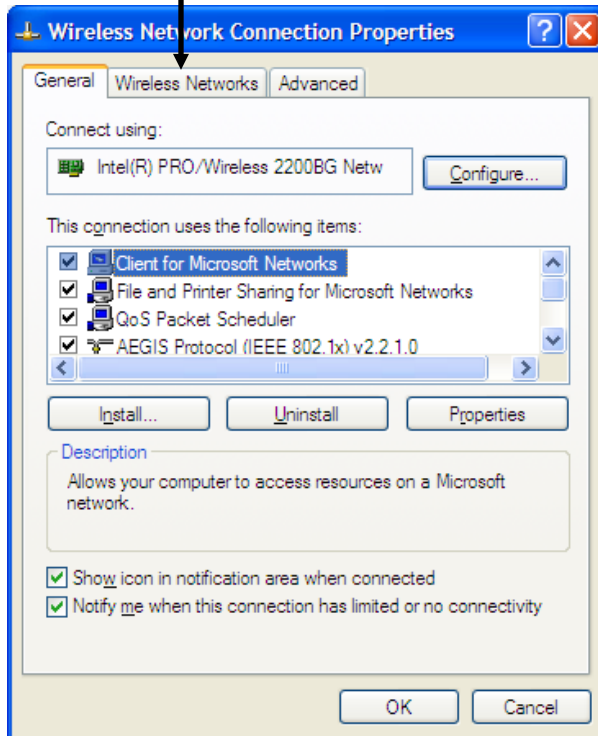
Click **Cancel**



Go to **Change advanced settings**



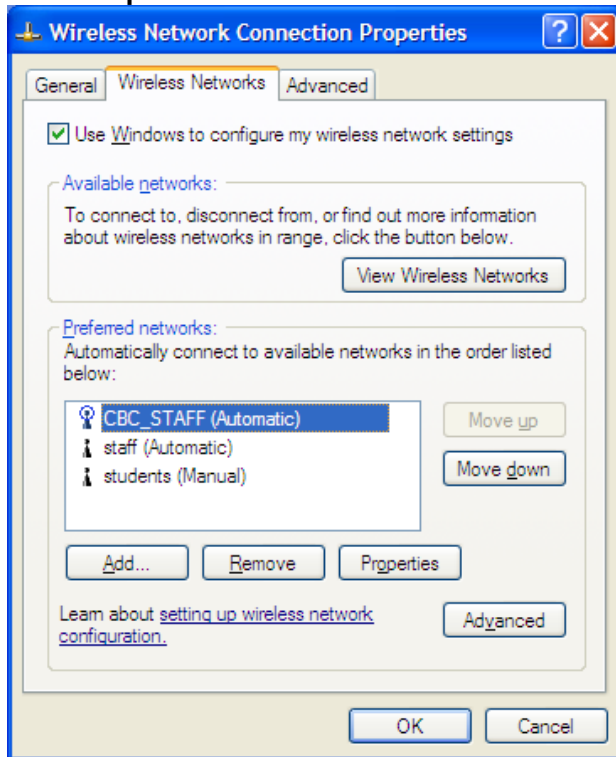
Click on **Wireless Networks** tab



## Wireless Networks

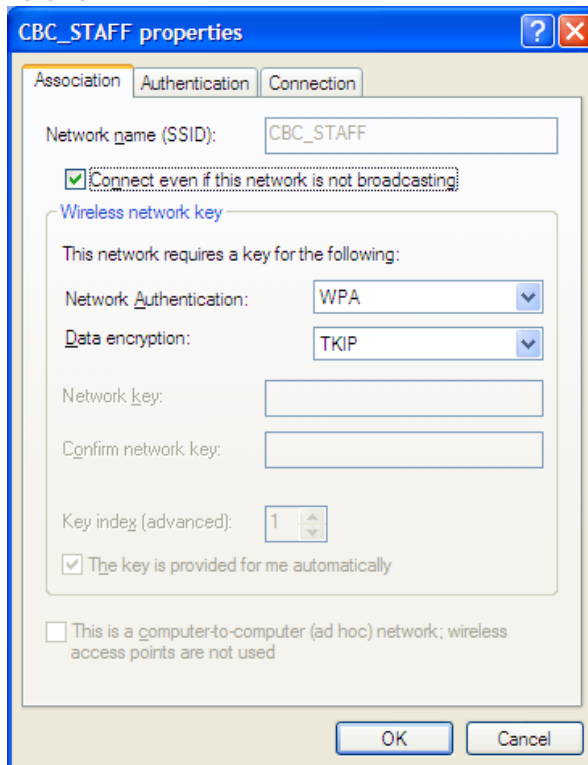
Click on **CBC\_STAFF** ....

Click **Properties**



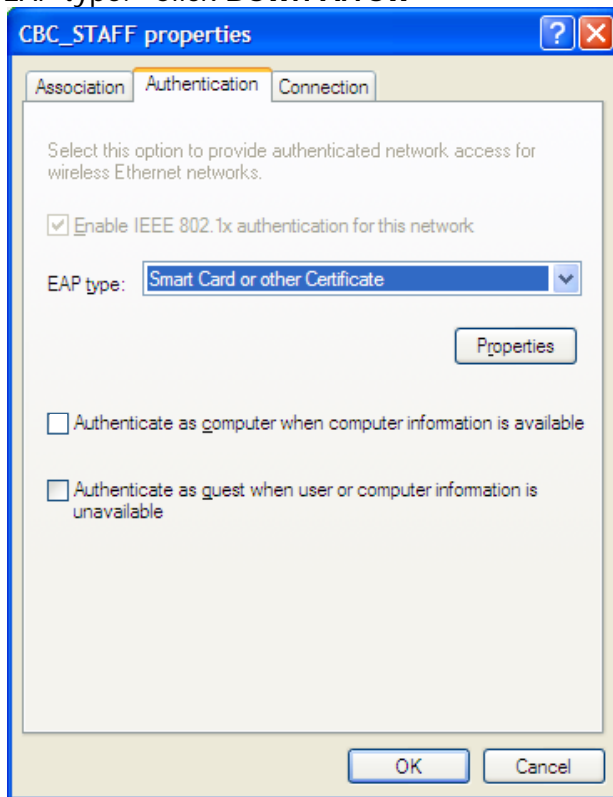
## Association Tab

As shown



*Authentication tab*

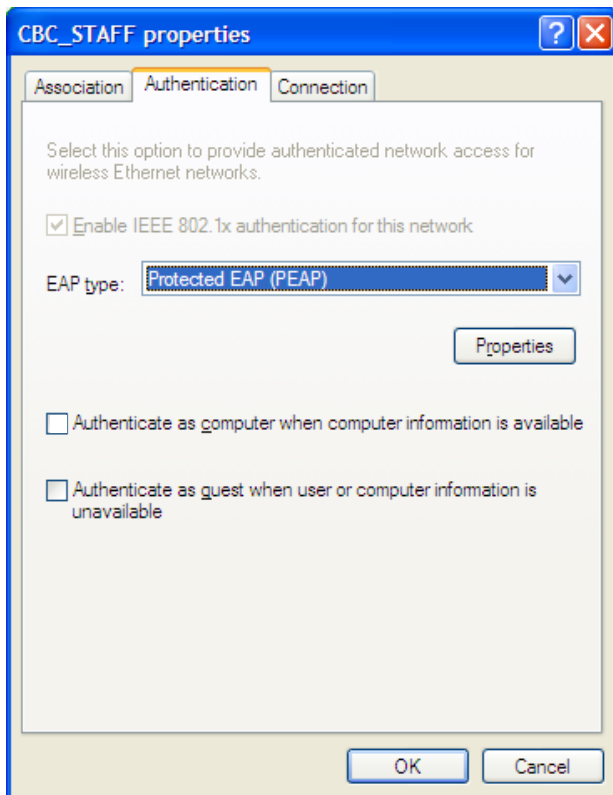
EAP type: Click **Down Arrow**



*Authentication tab*

Select **Protected EAP (PEAP)**

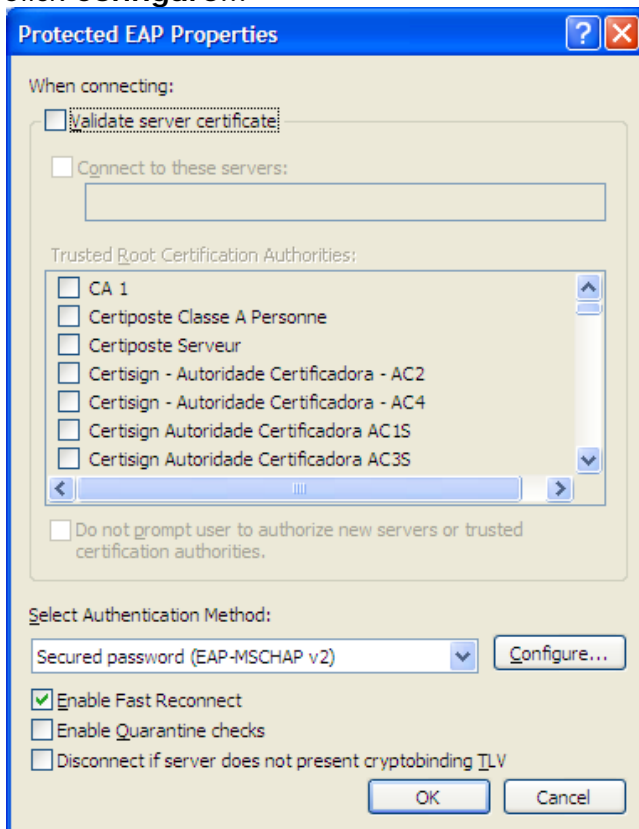
Click **Properties**



*Protected EAP (PEAP)*

Uncheck **Validate server certificate**

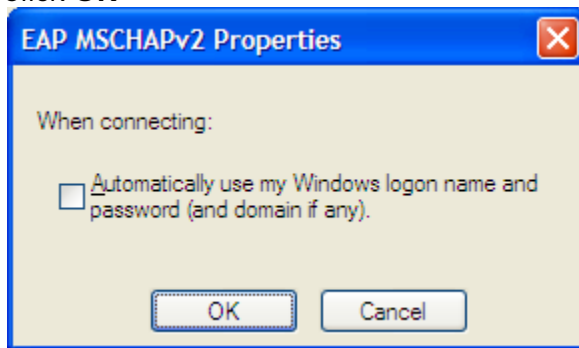
Click **Configure...**



*When connecting:*

Uncheck **Automatically use.....**

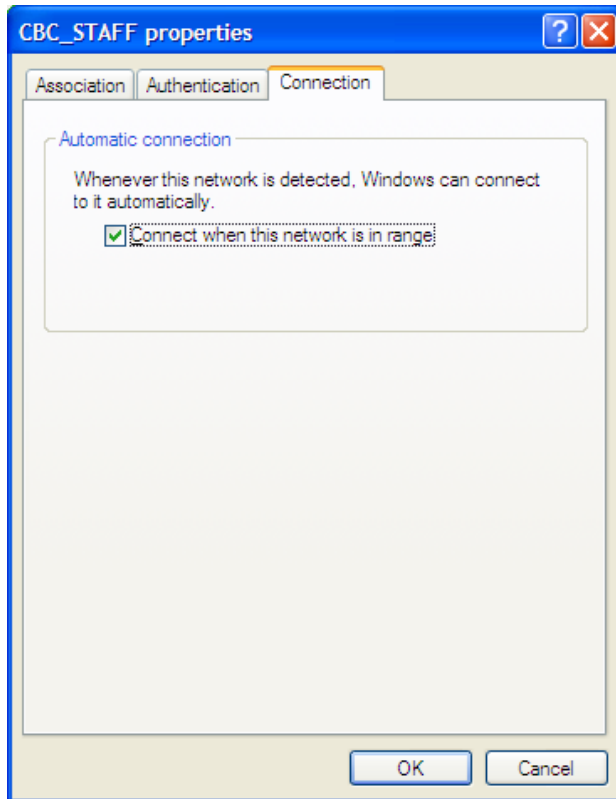
Click **OK**



Connection tab

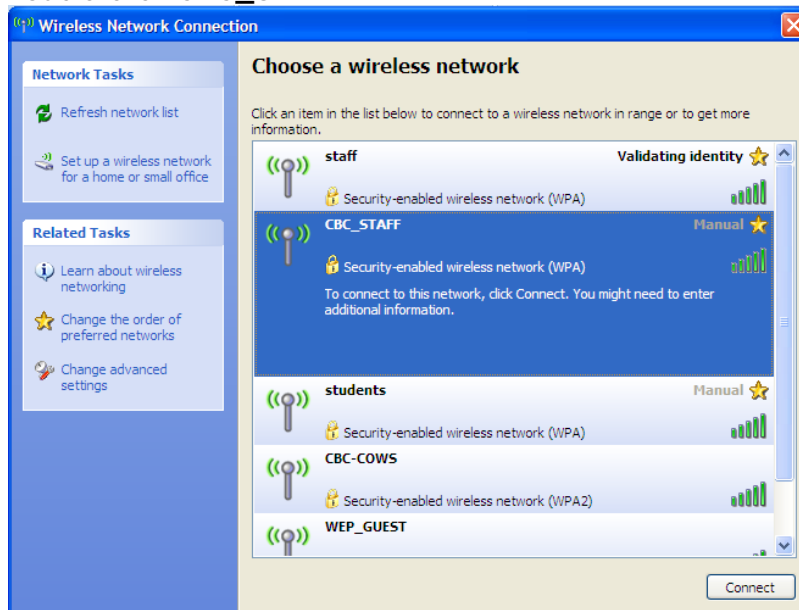
Check **Connect when this network is in range**

Click **OK**



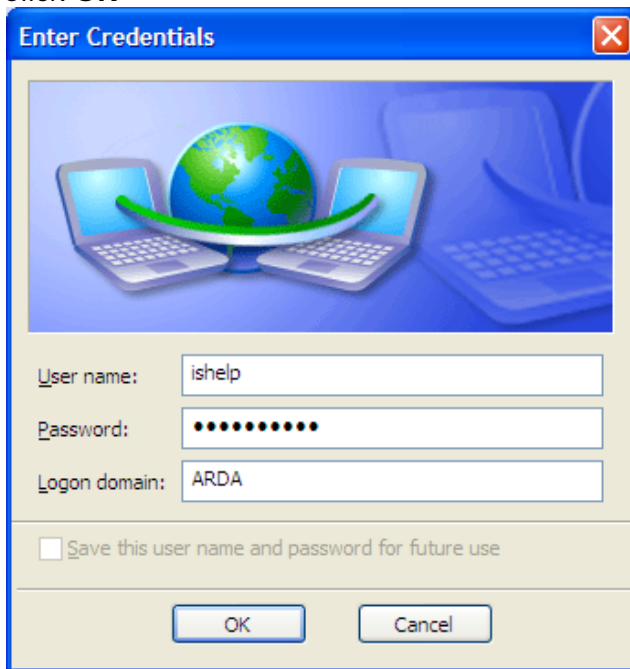
Click **OK** | **Ok**

Double-click **CBC\_STAFF**



*Enter Credentials*

Type in end-user information  
Logon domain is now **ARDA**  
Click **OK**



You are now connected

