

Wireless Network Configuration on Mac

System Requirements:

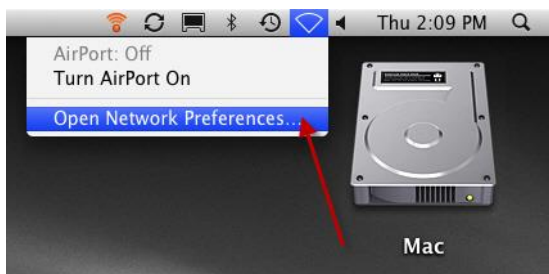
Mac OS Version 10.5

Procedure:

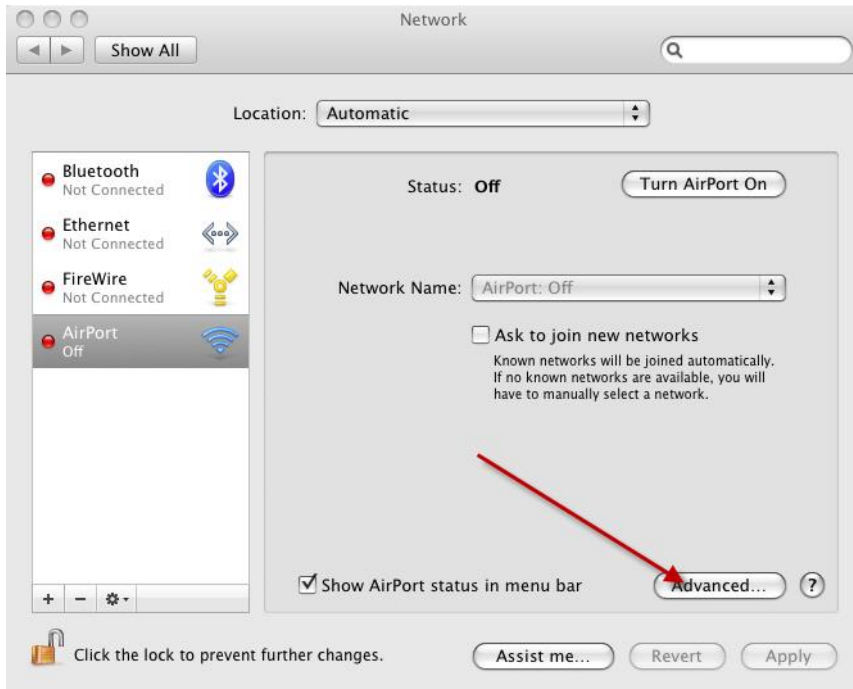
1. Click **Turn AirPort off** (if on)



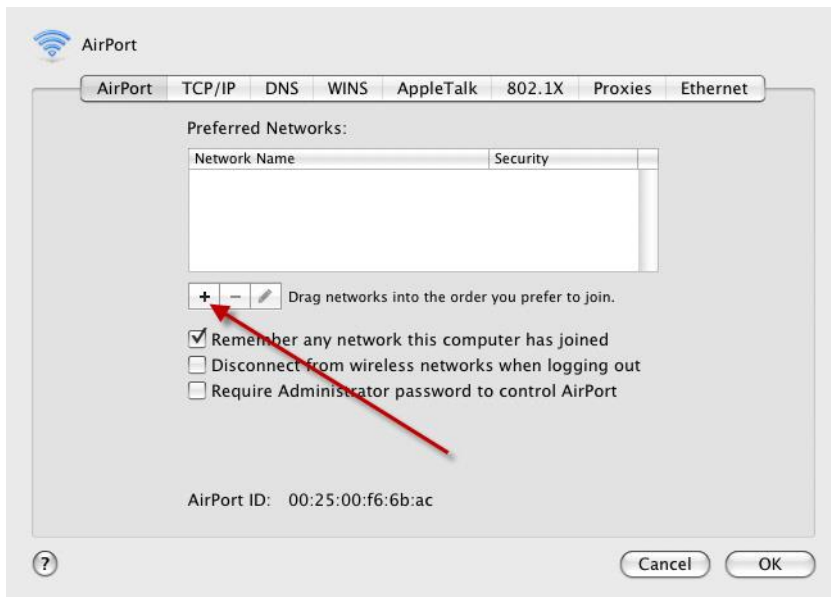
2. Click **Open Network Preferences**



3. Click **Advanced**



4. Click +



5. Type **students** in **Network Name** field

Enter the name of the network.
Enter the name of the network you want to add, and then enter the password if necessary. You can also click Show Networks to see a list of available networks.

Network Name: ←

Security:

Remember this network

6. Select **WPA Enterprise**

Enter the name of the network.
Enter the name of the network you want to add, and then enter the password if necessary. You can also click Show Networks to see a list of available networks.

Network Name:

Security:

- WEP Password
- WEP 40/128-bit hex
- WEP 40/128-bit ASCII
- LEAP
- WPA Personal
- WPA Enterprise** ←
- WPA2 Personal
- WPA2 Enterprise
- 802.1X WEP

7. Type **User Name** (Student ID)
8. Type **Password** (6 digit birthday)

Enter the name of the network.
Enter the name of the network you want to add, and then enter the password if necessary. You can also click Show Networks to see a list of available networks.

Network Name:

Security:

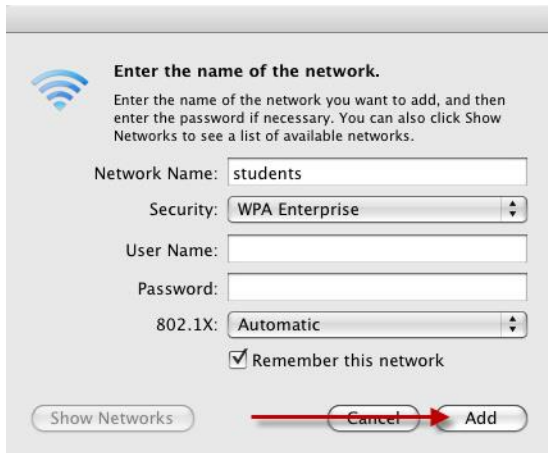
User Name: ←

Password: ←

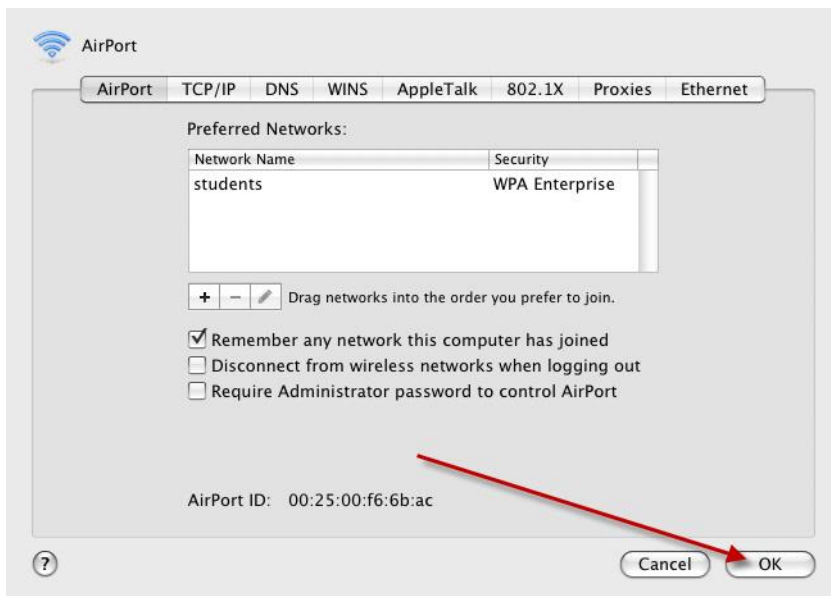
802.1X:

Remember this network

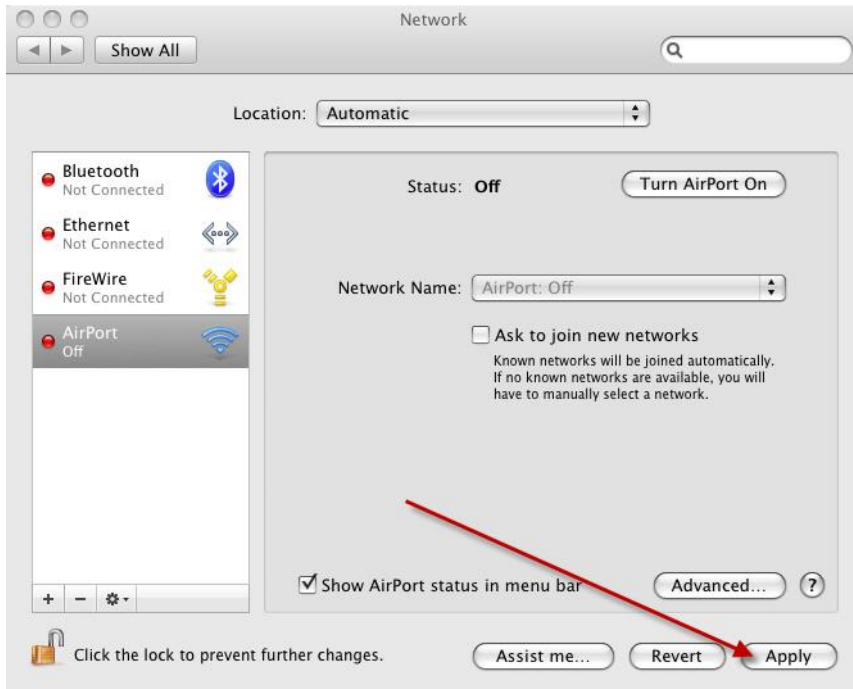
9. Click **Add**



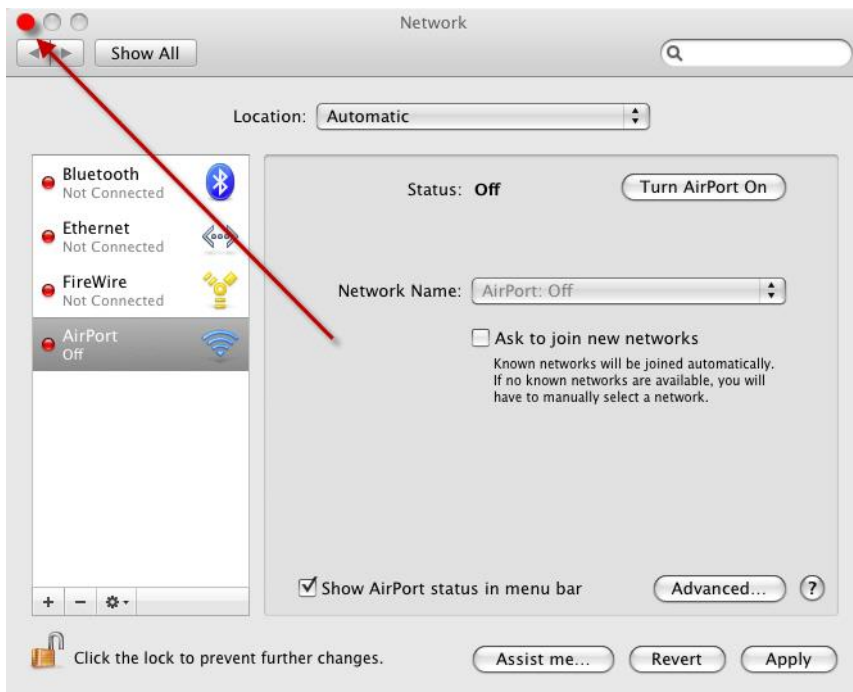
10. Click **OK**



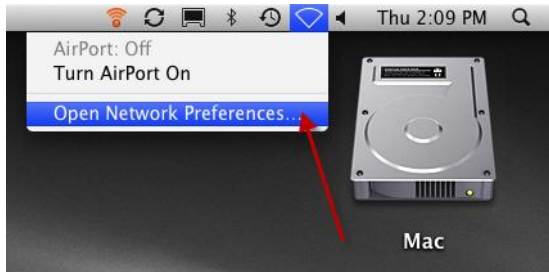
11. Click **Apply**



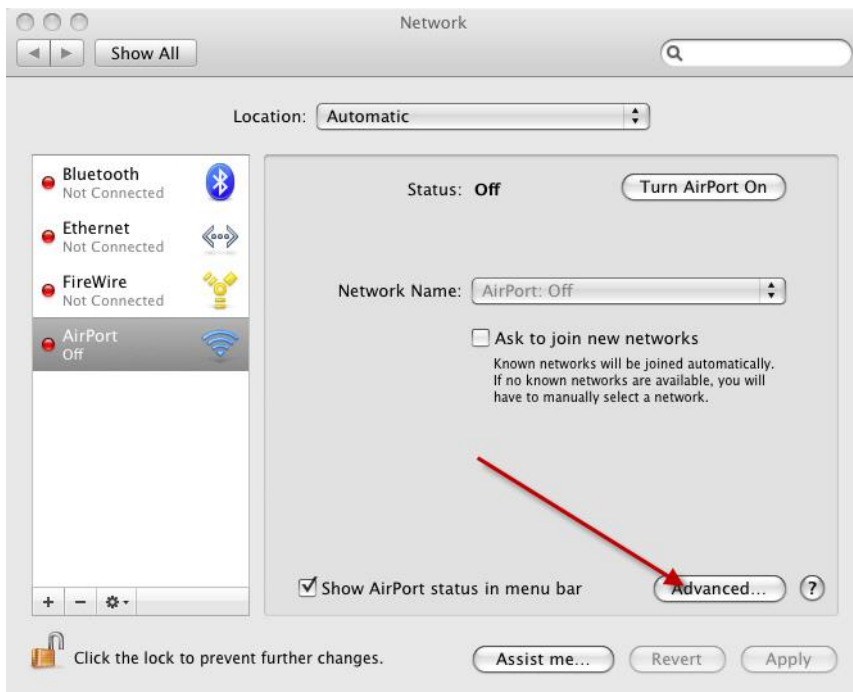
12. Close Network **Window**



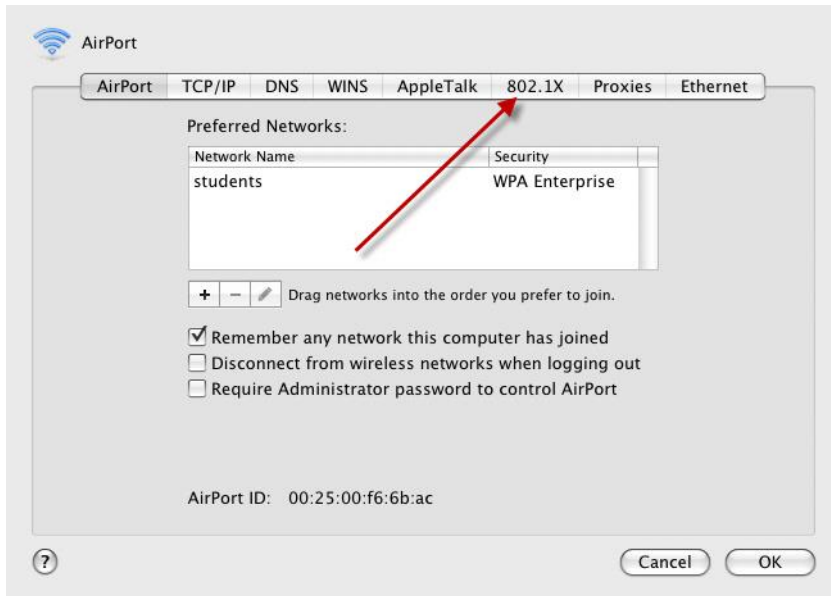
13. Click **Open Network Preferences**



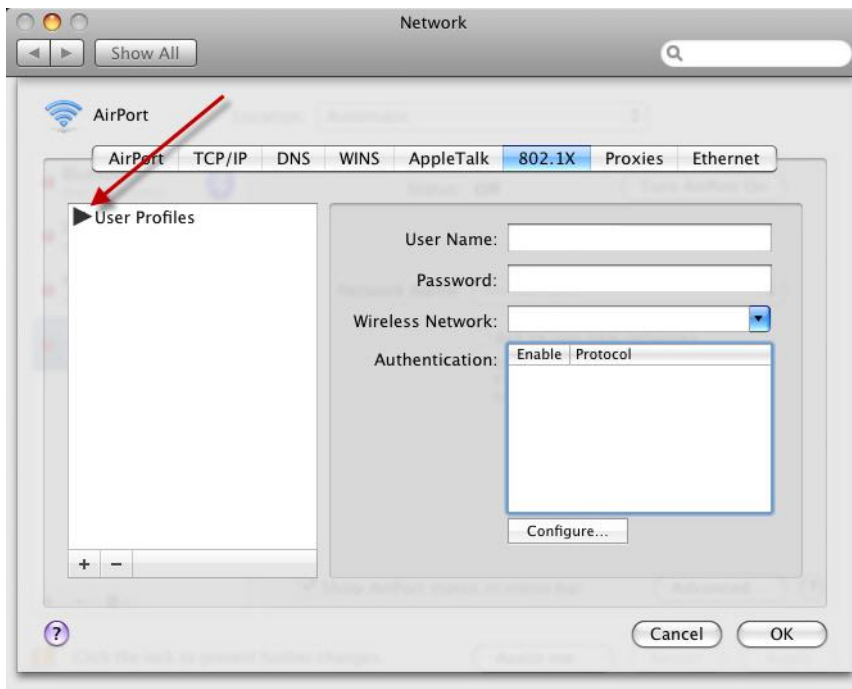
14. Click **Advanced**



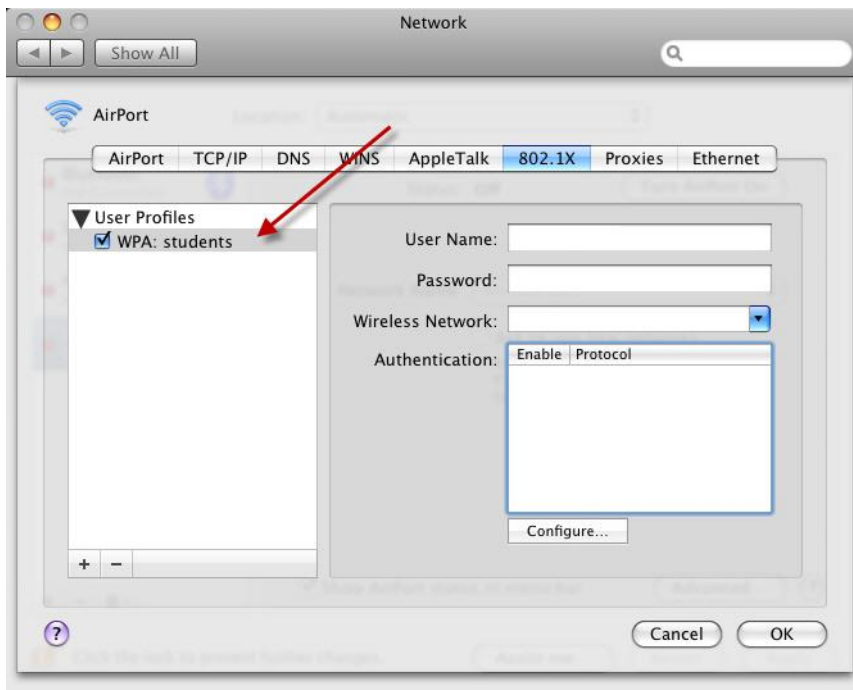
15. Click **802.1X**



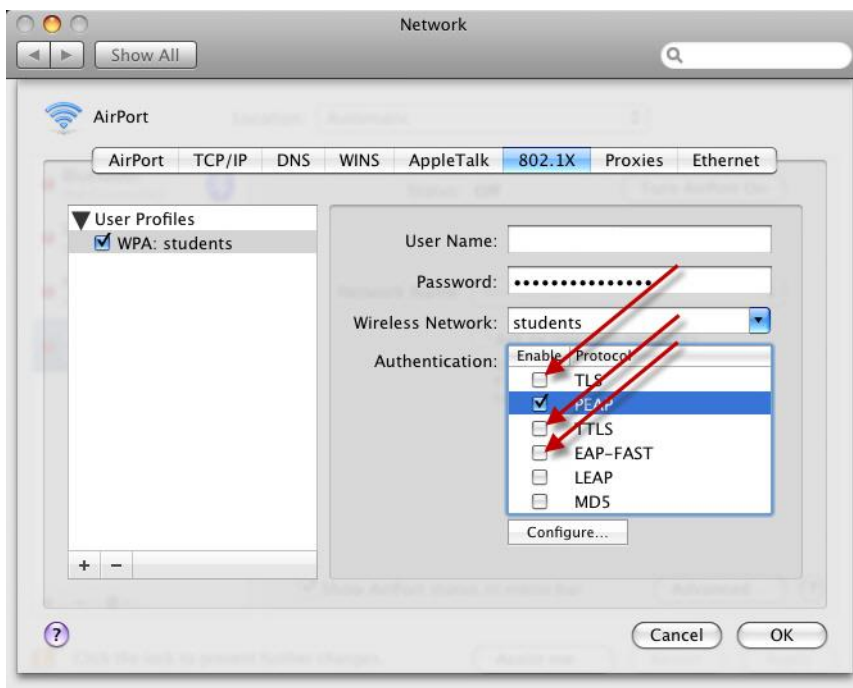
16. Click **Arrow** next to User Profile



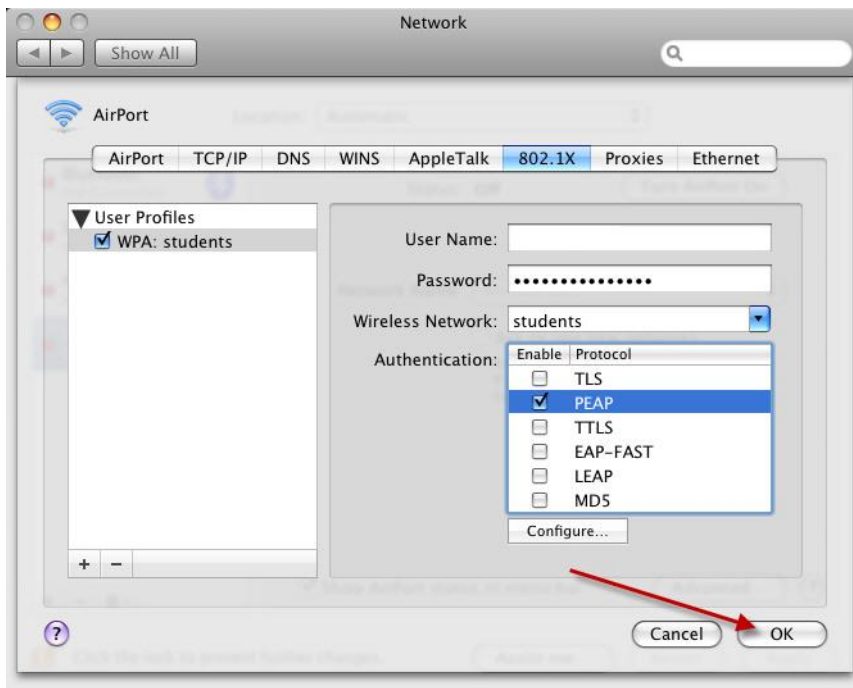
17. Select **WPA: students** do not uncheck it



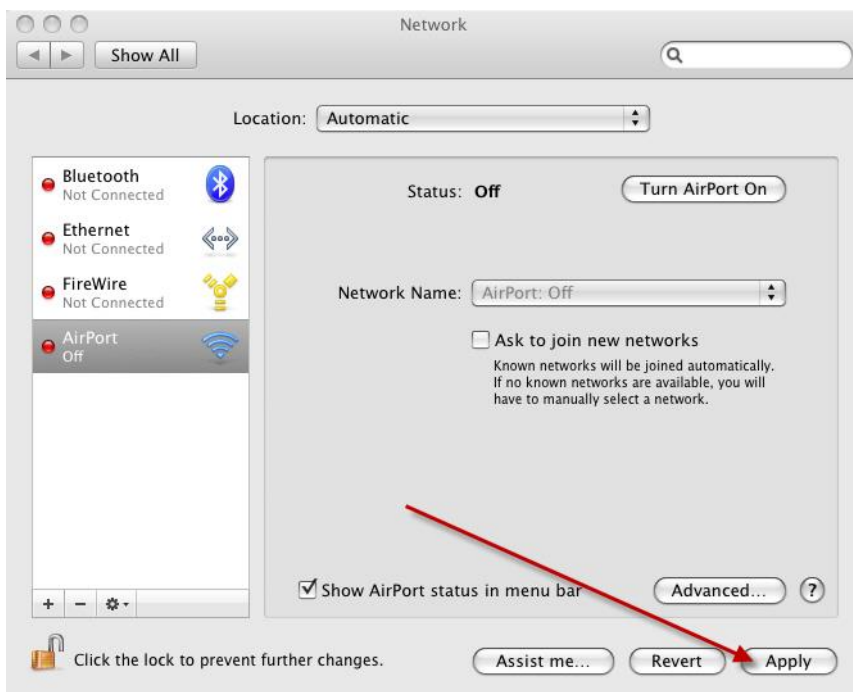
18. Uncheck **TLS**, **TTLS**, and **EAP-FAST** do not uncheck PEAP



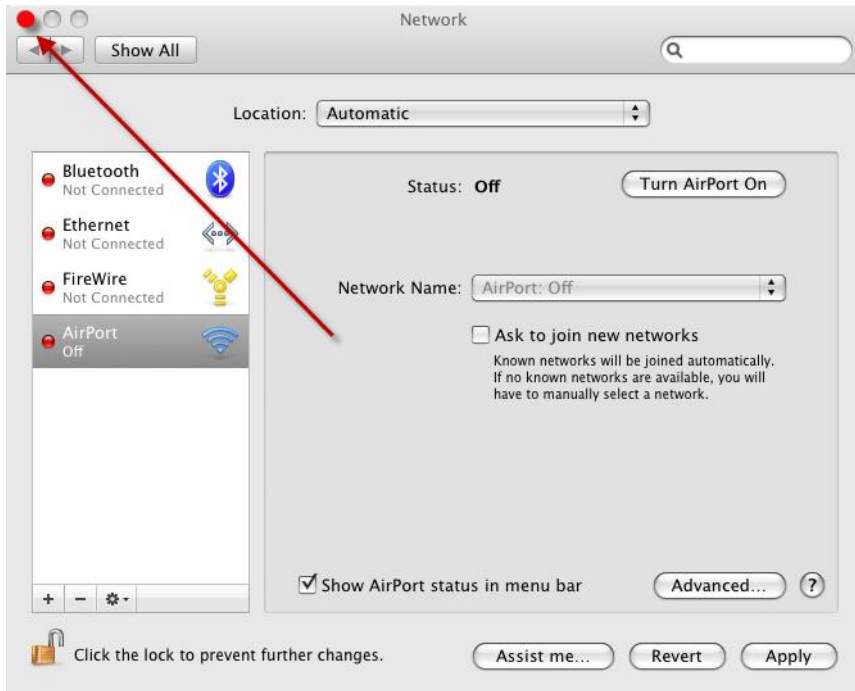
19. Click **OK**



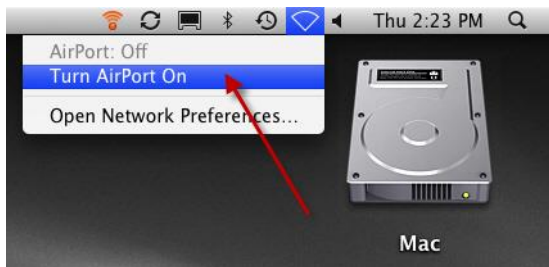
20. Click **Apply**



21. Close Network **Window**



22. Click **Turn on AirPort**



Congratulations! Your computer is now configured to use the CBC wireless network.