

# Wireless Network Configuration on Windows XP

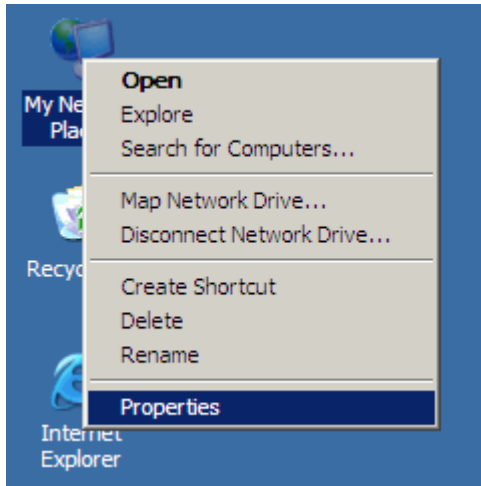
## System Requirements:

Windows XP with Service Pack 2

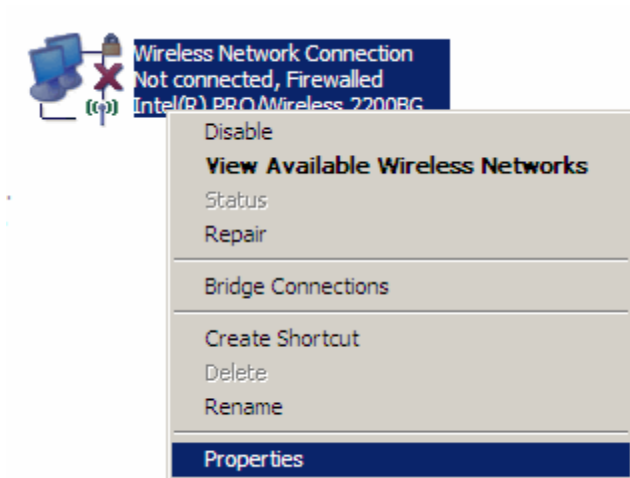
Microsoft PEAP Hotfix (See "**Very Important:**" at the bottom of this document)

## Procedure:

1. Right-click on **My Network Places**
2. Click on **Properties**



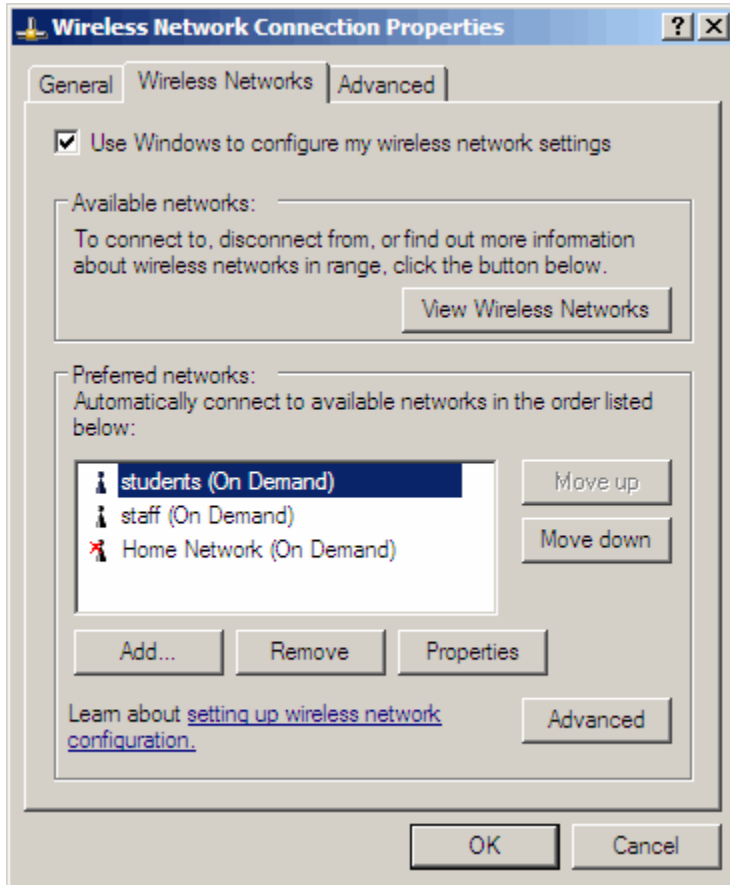
3. Right-click on **Wireless Network Connection** (or whatever you have renamed it to)
4. Click **Properties**



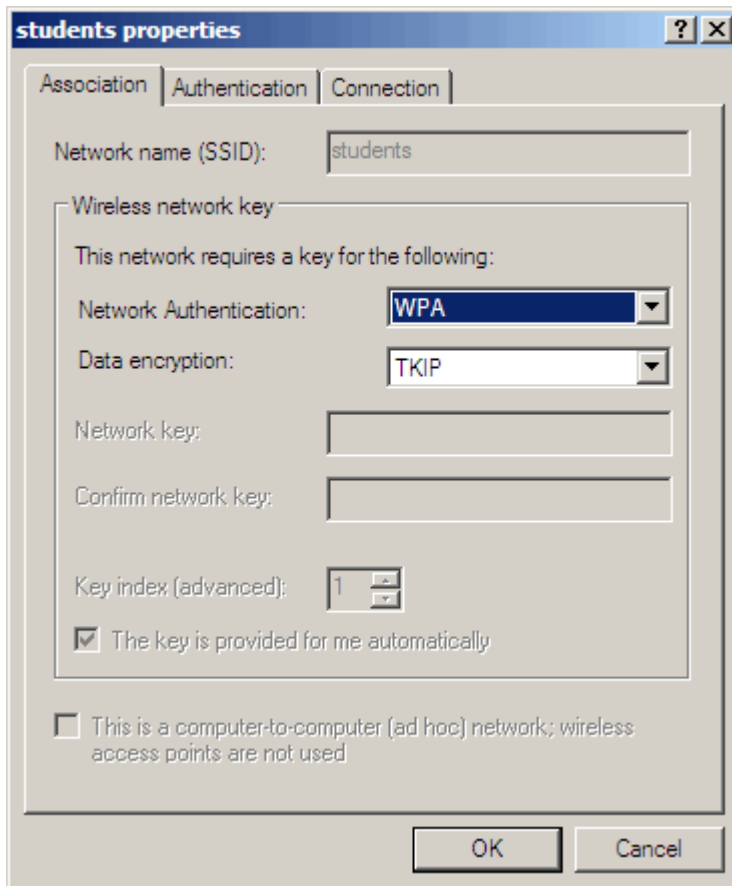
5. On the **Wireless Network Connection Properties** window, click on the **Wireless Networks** tab
6. Look under the **Preferred networks** section.

If the **students** (or **staff** if you are staff) network is listed, select it and click the **Properties** button.  
Skip step 7

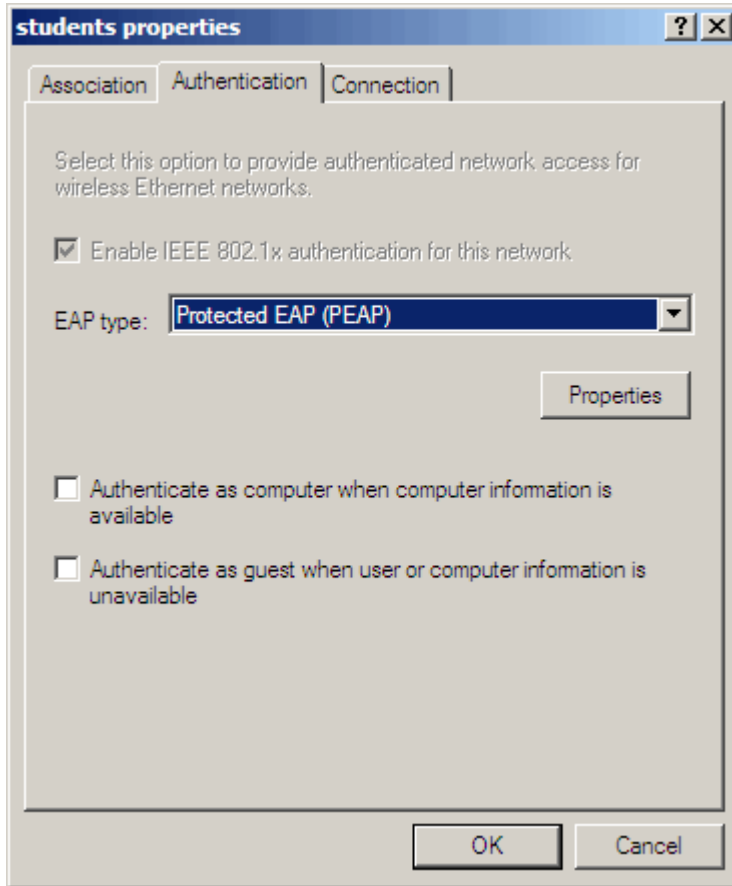
7. If the **students** (or **staff** if you are staff) network is not listed, click the **Add** button under the **Preferred networks** section



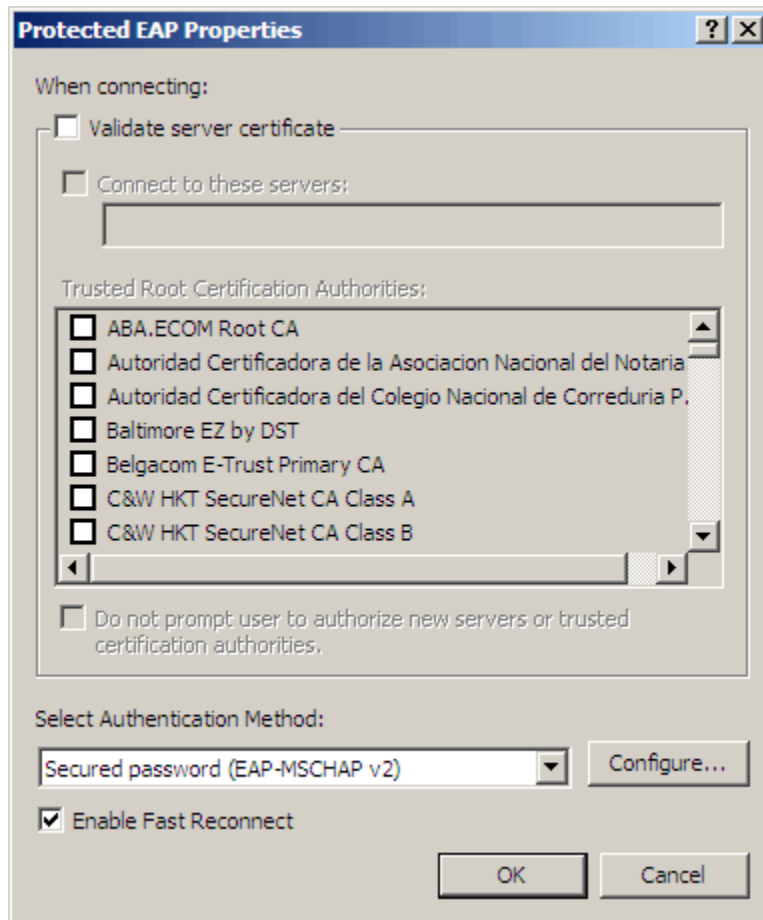
8. Click on the **Association** tab
9. If the **Network name (SSID)** field is blank, type **students** (or **staff** if you are staff) in the field
10. Select **WPA** from the **Network Authentication** drop-down list
11. Select **TKIP** from the **Data encryption** drop-down list



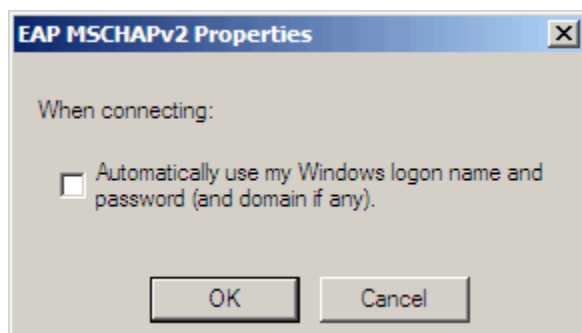
12. Click on the **Authentication** tab
13. Select **Protected EAP (PEAP)** from the **EAP type** drop-down list
14. Uncheck **Authenticate as computer when computer information is available**
15. Uncheck **Authenticate as guest when user or computer information is unavailable**
16. Click on the **Properties** button under **EAP type**



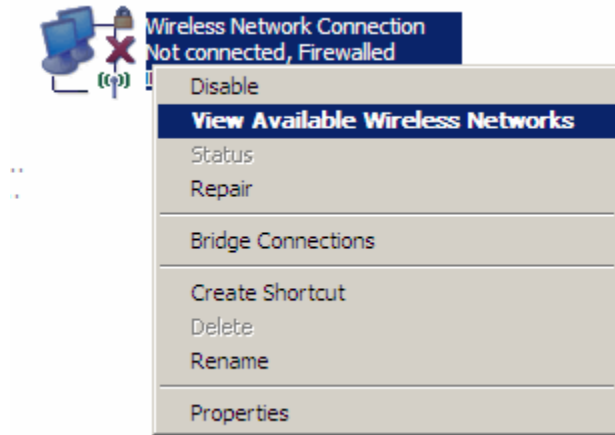
17. Uncheck **Validate server certificate** in the **Protected EAP Properties** window
18. Select **Secured Password (EAP-MSCHAP v2)** from the **Authentication Method** drop-down list
19. Check **Enable Fast Reconnect**
20. Click on the **Configure** button



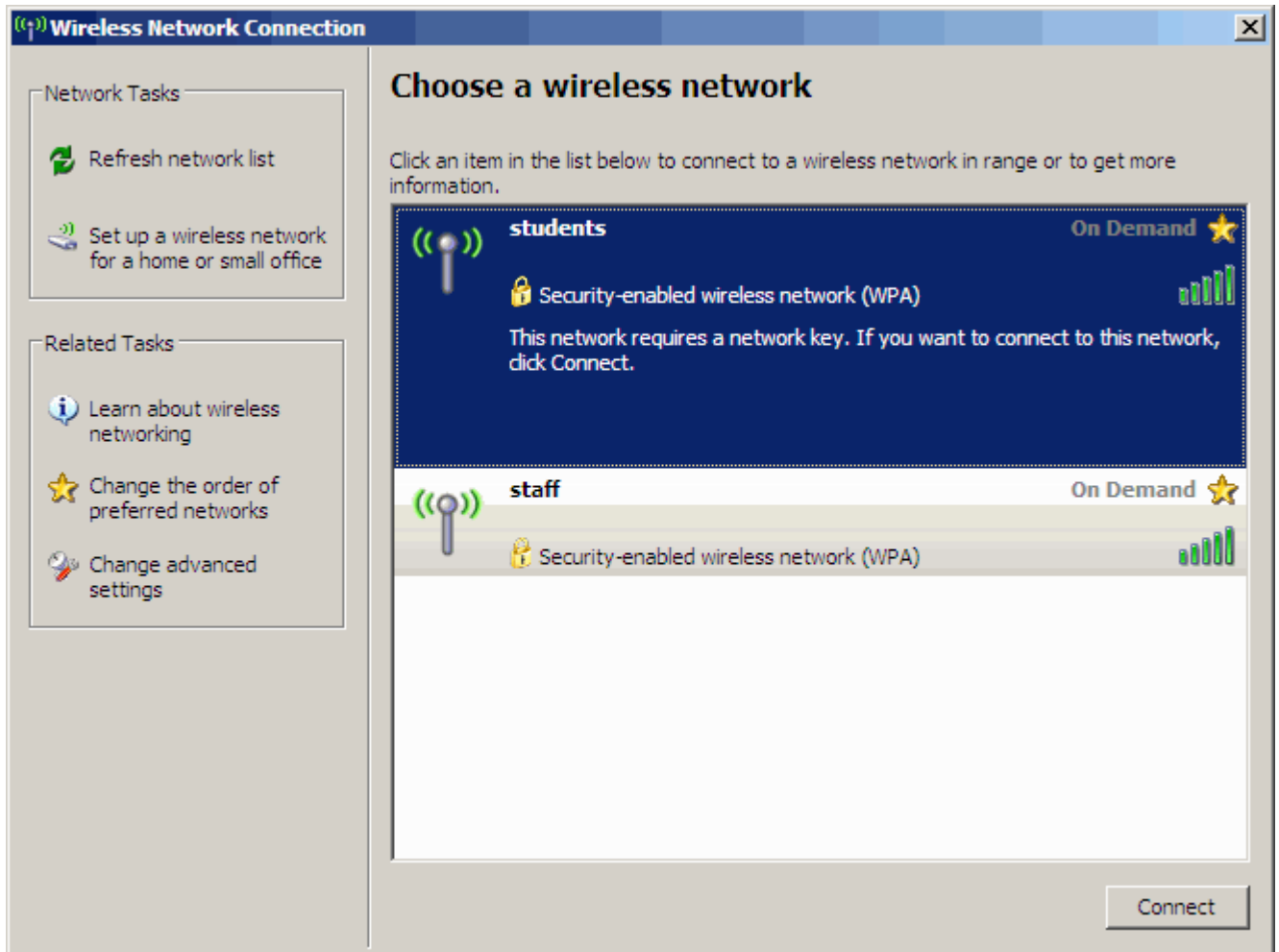
21. Uncheck **Automatically use my Windows logon name and password (and domain if any)** in the **EAP MSCHAPv2 Properties** window



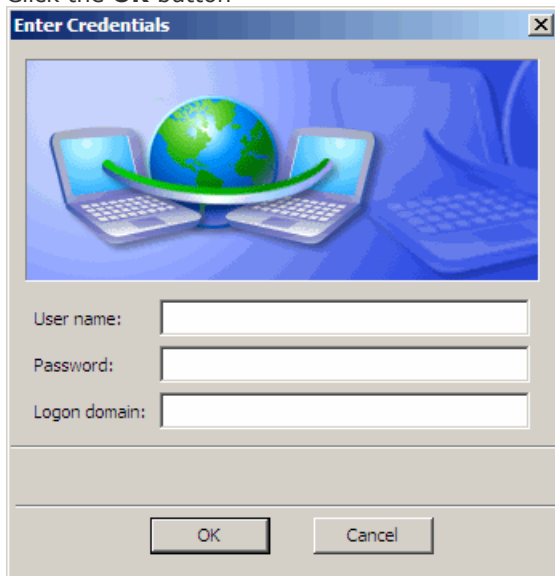
22. Click the **OK** button in the **EAP MSCHAPv2 Properties** window
23. Click the **OK** button in the **Protected EAP Properties** window
24. Click the **OK** button in the **students** (or **staff** if you are staff) **properties** window
25. Click the **OK** button in the **Wireless Network Connection Properties** window
26. Right-click on the **Wireless Network Connection** (or whatever you have renamed it to)
27. Click **View Available Wireless Networks**



28. Select the **students** (or **staff** if you are staff) network
29. Click the **Connect** button



30. Click on the **Wireless Network Connection** bubble that will appear near the task bar to see the **Enter Credentials** window
31. Type your **Student ID** in the **User name** field
32. Type your CBC **PIN** in the **Password** field
33. Type **ARDA** in the **Logon domain** field
34. Click the **OK** button



**Very Important:** Some computers with Windows XP Service Pack 2 installed may experience problems reconnecting to the network after they have been disconnected. If you are able to connect once, and then unable to reconnect without rebooting, you can install the following Microsoft HotFix to see if it helps with the problem.

<http://www.columbiabasin.edu/wifi/instructions/WindowsXP-KB885453-x86-enu.exe>

For more information about the HotFix, please visit Microsoft's website at

<http://support.microsoft.com/default.aspx?scid=kb;en-us;885453>

**Congratulations! Your computer is now configured to use the CBC wireless network.**